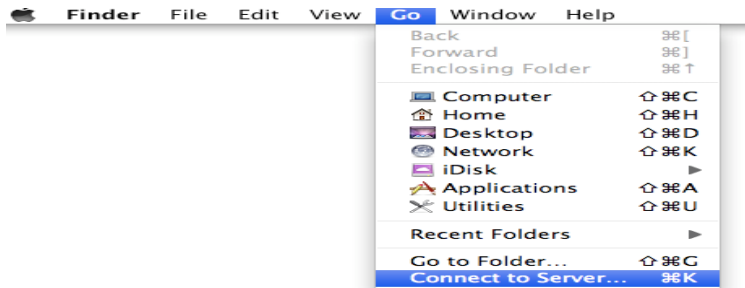
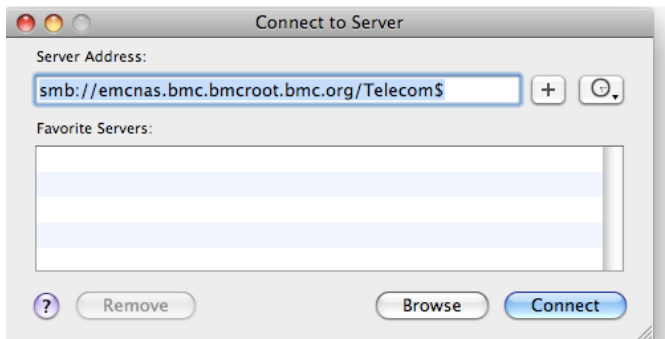


Connecting to a network drive using Mac OS X:

Click Go on the finder window and select “Connect to Server”



Under server address, type the NAS FQDN and the Network drive and then click connect:

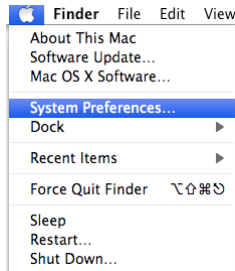


Enter your bmc credentials using – use “bmc\” before your username. Click connect, and your drive will open.

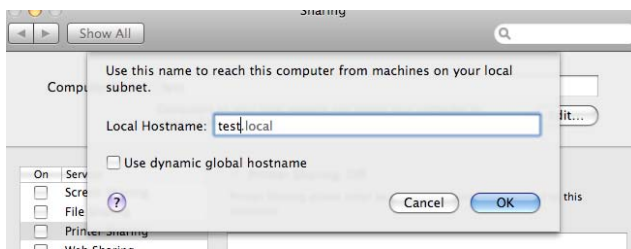
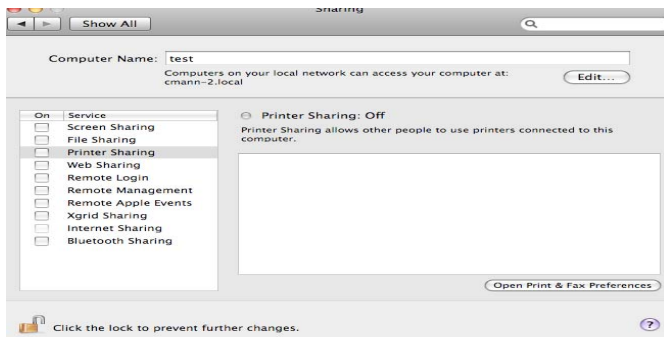


Using System preferences:

Click the apple icon in the Finder taskbar and click on System Preference.

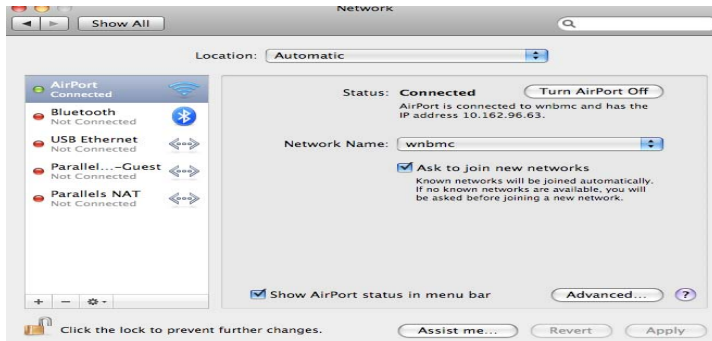


To check or change the computer name, click on sharing and then click edit and then you can change the local hostname (computer.local).

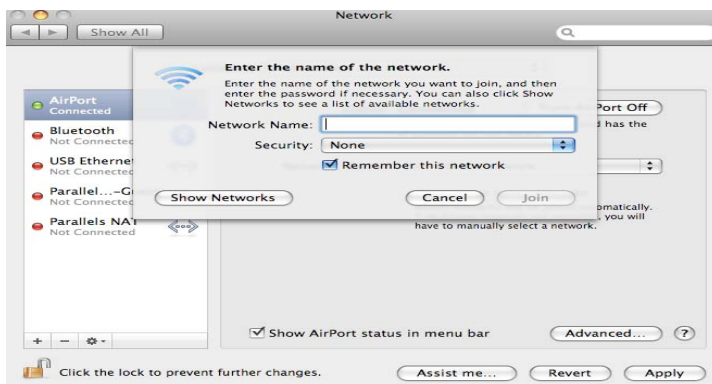


Connecting to wireless (public) or wired network:

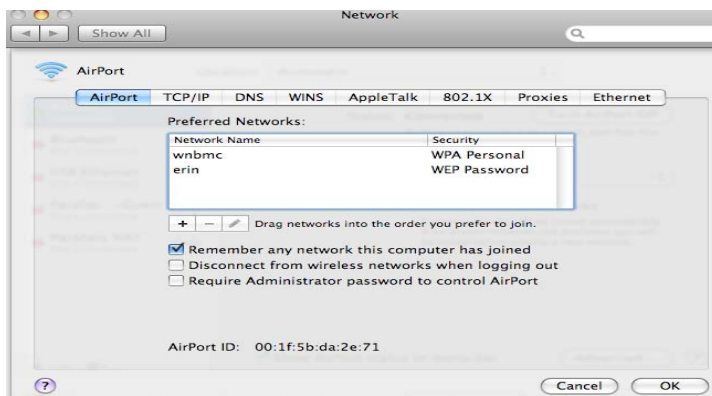
Open System Preferences and select Network – For wireless (public) connection, click on Airport and then click the arrow next to Network name.



Select “Join other network” and enter the SSID and Security protocols if necessary and then click join.



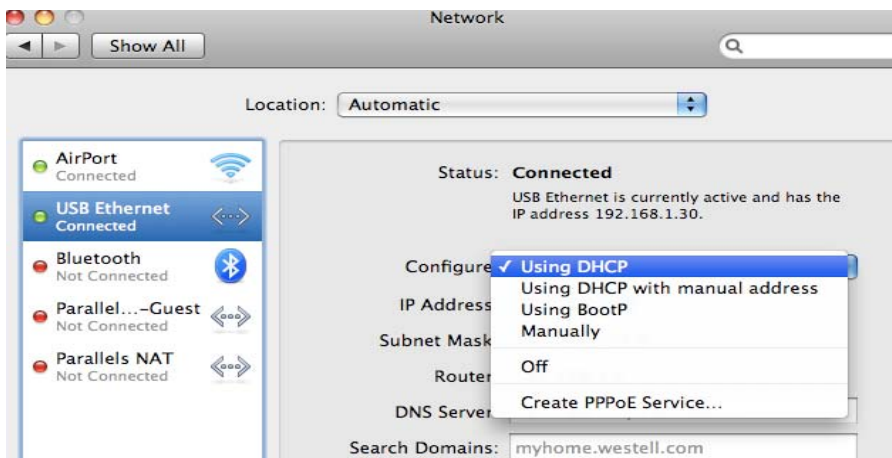
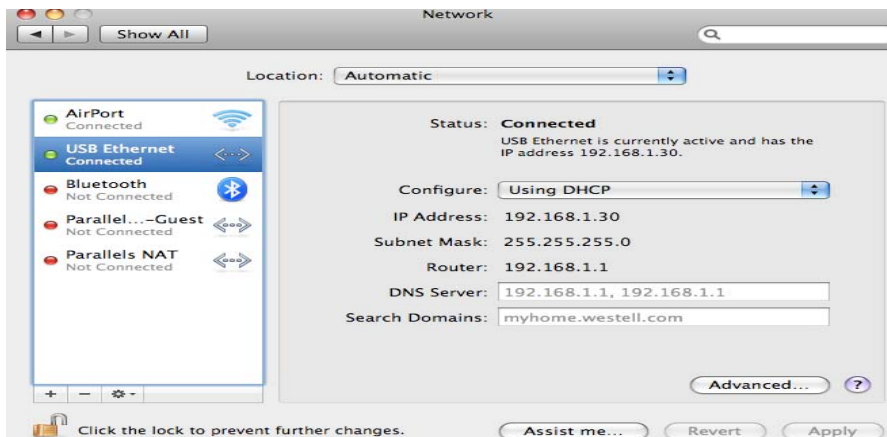
Note – If you have Airport selected (highlighted) and click on advanced you can the SSID that you need to connect to by clicking on the + button and following the steps above. The Airport Mac address is also listed at the bottom of the Airport page.



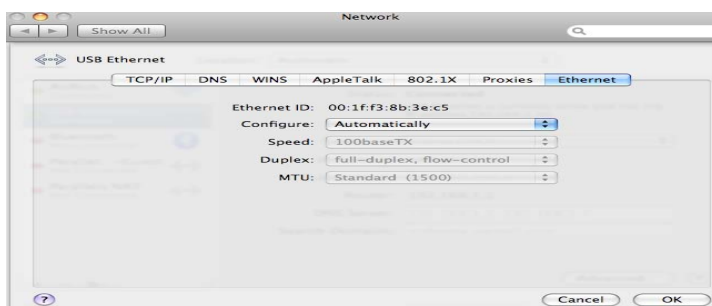
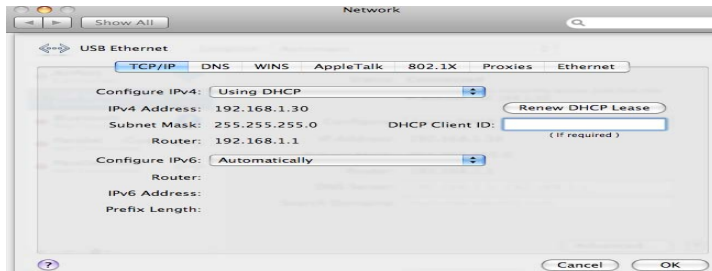
## Wired Network:

Highlight the appropriate network connection – click the arrow next to configured and select the appropriate configuration.

Note: You may need to hit apply for some network setting to take affect. These settings are also available by clicking the advance tab and selecting the settings you need to change.



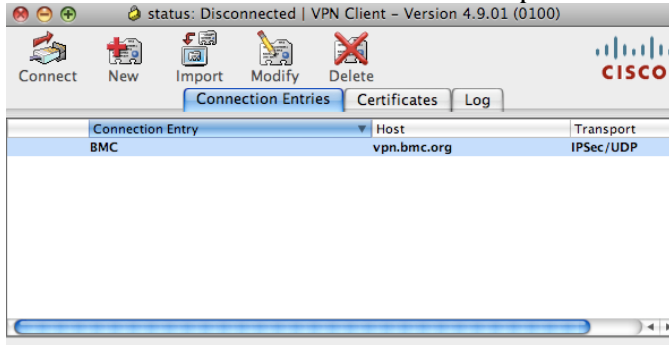
You can locate the mac address for the wired connection by clicking on the Ethernet tab.



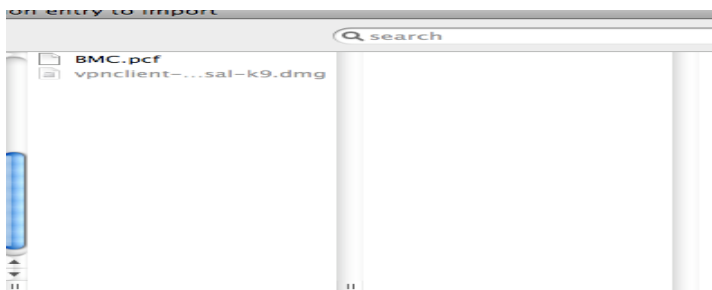
Configuring the VPN client for your mac:

Download and install the appropriate Client for you Mac. You will then need to import the BMC configuration settings file in order to connect to BMC.

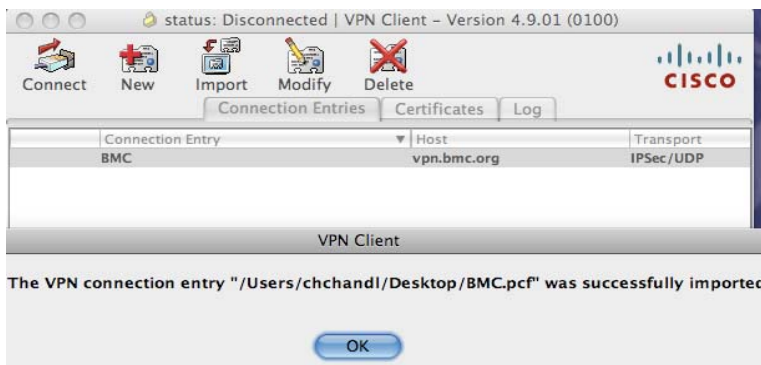
Launch the VPN client and click on import



This will open a file explorer box where you can then point to the location where you copied the bmc connection entry (bmc.pcf).

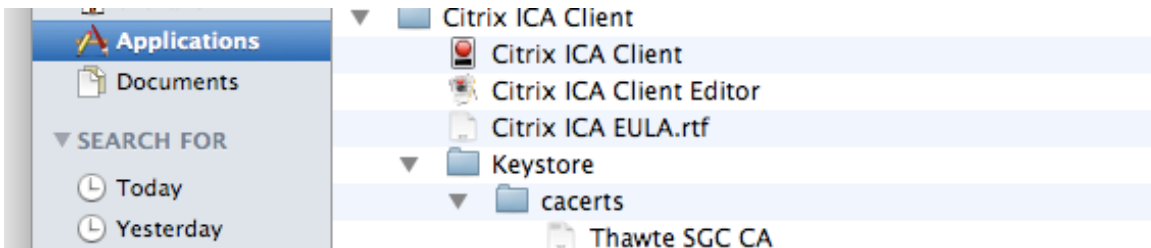
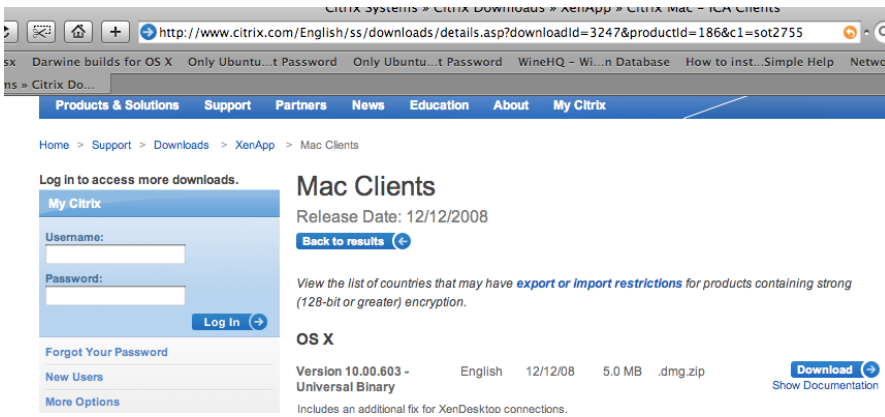
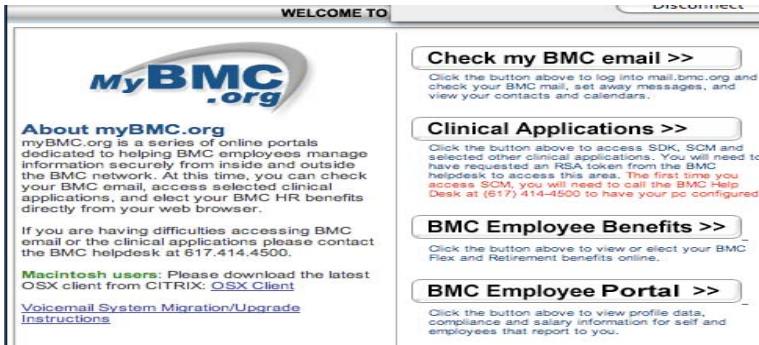


Highlight this file and select open. You will then see a VPN client popup noting that the connection entry was successfully imported. Click ok. (Note the connection entry in the above screenshot).



Installing and configuring Citrix ica client on Mac OS X (fully updated) using the Safari web browser:

Navigate to [www.mybmc.org](http://www.mybmc.org) and click the link for the latest OS X Citrix client. Download and install the client. Once installed, navigate to the Applications and open the Citrix ICA client folder. You will need to copy the Thawte SCG CA certificate to the keystore/cacerts folder. You will have to create these folders if they are missing. Connect to [www.mybmc.org](http://www.mybmc.org) and click on Clinical Applications and log in with your credentials.



Once you have logged in, click on the Citrix app that you would like to access. The application window will open and then you can log in.

Note: Users may need (will probably have to) open the launch.ica file seen in the Download window in order to launch the app that they need to run (open) in Citrix. Each time you launch a different Citrix app it downloads another launch.ica (see 3<sup>rd</sup> screen shot) file.

