



A New Era

PHARMACY RESIDENCY
2019 ANNUAL REPORT

BOSTON
MEDICAL
CENTER

Dear prospective applicant:

It's a **new era at Boston Medical Center**. We just completed a major construction and consolidation project in October 2018. For decades, Boston Medical Center consisted of two primary inpatient campuses – Menino Pavilion and East Newton Pavilion. Over the past five years, we have built new patient care spaces and renovated existing areas to consolidate all of our inpatient services in one place. In October 2018, we successfully and safely moved 200 patients from East Newton to the Menino Pavilion! As we embark upon yet another stage of our journey that began in 1864, it is important to emphasize that our mission has remained the same over the past 155 years – to provide exceptional care without exception to all.



It's a **great time to be at Boston Medical Center** and an **even better time to be a part of the Department of Pharmacy**. I could list the many tangible reasons that illustrate why it is a great time to be part of the Pharmacy Department – team growth, novel clinical programs, and an integrated practice model. Rather, I prefer to focus on my response to the question, “What brings you meaning, fulfillment, and joy at work”? This is a question that managers ask their team members monthly during “leader rounds”, our framework for one-on-one meetings. **Being part of an amazing team** is what brings me meaning, fulfillment, and joy at work. From the pharmacists on the front lines taking care of patients to the back-office leaders and support staff, we’ve built a truly special team over the past several years. We’ve created a team that works across boundaries, collaborates across care settings, and moves mountains to provide the best care for patients. Not only do we strive to deliver the best care for our patients, but we value caring for each other, as well. From making sacrifices to help a colleague get a day off to gathering together to celebrate major life milestones (like having a baby), to a simple high five in the hallway, our mission of “exceptional care without exception” extends to each other, as well.

I am proud to be a part of the Boston Medical Center pharmacy team and invite you to learn more about the “secret sauce” that makes the Department of Pharmacy at Boston Medical Center an exceptional place to be. Enjoy the 2019 Annual Report!

Sincerely,



Kevin J. Horbowicz, Pharm.D., BCPS
Associate Director – Inpatient Clinical Pharmacy Services

BMC Campus Consolidation Transforms Pharmacy Services for Surgical Patients

In October 2018, the last patient was safely moved from the East Newton Pavilion to the newly renovated Menino Pavilion, marking the end of BMC’s clinical campus redesign. This multi-million-dollar construction and renovation project began in 2014 and aimed to combine clinical programs previously housed in two separate medical campuses into one. Renovations and department moves occurred throughout the Menino campus to expand bed space and allow for increased patient volume. Campus consolidation also meant that our once separate inpatient pharmacies came together on the Menino campus in October 2018. This move was no small feat as we consolidated medications from five carousels to three, merged the workflow of two IV rooms into one and moved over 75 pieces of Pyxis equipment!

As BMC pharmacists continue to provide expanded clinical pharmacy services, one of the biggest gains from our campus consolidation was the completion of the Intra-Procedural Platform (IPP) pharmacy satellite. This satellite is located within the surgical suite on the second floor of the Menino Pavilion and includes workspace for a pharmacist and a hood for sterile compounding. Before campus consolidation, one clinical pharmacy specialist provided clinical pharmacy services to the East Newton surgical areas as part of a pilot program. With the completion of the IPP and campus consolidation, BMC now has two full-time pharmacists dedicated to working with surgical services seven days a

week in addition to the IPP pharmacist! The newly renovated surgery areas in the Menino Pavilion and Moakley Building now house 24 operating rooms, endoscopy suites, four interventional radiology/cath labs, and two electrophysiology procedure rooms with expanded pre-operative and PACU space. On weekdays one pharmacist staffs the IPP starting at 6 am and a second pharmacist arrives at 10 am to provide extended services to the PACU, including order verification, medication delivery, and medication reconciliation.

The expanded PACU capacity allowed same-day surgery or one-night stay patients to remain bedded in that area, which ultimately adds to BMC’s active bed space. Our surgery pharmacists assist with discharge needs and help facilitate discharge medication delivery so our patients can return home after their procedure with discharge prescriptions in-hand. In November 2018 our perioperative pharmacy services expanded even further to include a weekday evening shift. This expansion was made possible by incorporating our PGY-1 residents into this shift which allows for de-centralized support for admission medication reconciliations and discharge transition of care services, with a focus on transplant discharges until 9 pm.

In addition to improving pharmacy operations, our surgery team continues to identify areas for advancement and has initiated multiple quality improvement (QI) initiatives. Some recent QI initiatives include: Standardizing

BMC Campus Consolidation Transforms Pharmacy Services for Surgical Patients

the workflow between the emergency department and cath labs to ensure continuity of care for critical patients, piloting the use of liposomal bupivacaine to decrease postoperative morphine milligram equivalents, and optimizing appropriate use of sugammadex for the reversal of neuromuscular blockade. Our pharmacists provide regular education to the nursing and physician groups to increase awareness of pharmacy services and have become an integral part of BMC’s surgical team. Healthcare is changing and with the expanded services BMC’s pharmacy department continues to provide, we are aligning with BMC’s vision to “make Boston the healthiest urban population in the world by 2030.”



That feeling when you move an entire pharmacy to a different campus!

The moving team packing a Pyxis into the elevator. Each unit needed a Pyxis at their sending site on East Newton and the transfer unit in Menino to make sure patients continued to receive exceptional care without exception.



Teamwork makes the dream work when over 75 Pyxis pieces had to be moved and 11 new units needed to be built.

BMC Campus Consolidation Transforms Pharmacy Services for Surgical Patients

In 2014, Boston Medical Center began the 300-million-dollar campus redesign project which consolidated two campuses into one and allowed for renovations on several existing units, greatly improving our current facilities. Consolidating campuses will save millions on operational costs including approximately \$3 million per year in utilities and \$2 million per year in ambulance transfers. Say goodbye to our East Newton campus!



Michelle Cote (left) and Debra Lafond (right) work to move one of the automated dispensing cabinets. These are two of the many pharmacy members that worked diligently to coordinate this consolidation project. Michelle was one of the pharmacy members recognized as part of the campus consolidation team that won a Be Exceptional Award. This award is presented to employees, providers, and teams who demonstrate exceptional performance in the areas of core values and priority goals.

ALUMNI SPOTLIGHT SAMANTHA BASTOW, PHARMD, BCPS Boston Medical Center PGY-2 Emergency Medicine '12

Dr. Samantha Bastow earned her Doctor of Pharmacy degree at Palm Beach Atlantic University and completed her PGY-1 Pharmacy Residency training at Sarasota Memorial Health Care System in Sarasota, FL before coming to Boston Medical Center in 2011 for her PGY-2 in Emergency Medicine.

When Dr. Bastow was contemplating a career path, she recalls a strong desire to have a career in medicine that allowed her to perform clinical activities and have direct patient care. When she decided to pursue her PharmD, she knew that she would need to have residency training to achieve that goal. Her rationale for completing a residency is even more relevant for new graduates today as the landscape of clinical pharmacy has changed. Clinical positions are difficult to obtain without postgraduate training. Her pursuit of specialized training in Emergency Medicine is what brought Dr. Bastow to BMC and when asked to recall that time, she said her biggest concern was making sure she got the best training possible. By the end of her interview, Dr. Bastow was sure that if she came to BMC, she would get just that.

In her own words, Dr. Bastow remembers “at the end of my interview at BMC, I absolutely knew that it was the right place for me. It was evident that it would be a more challenging program compared to some of the others and I felt that would teach me the most. I really liked the idea of being part of a large residency class that spanned several areas of practice. I also loved the culture of the hospital – everyone from the pharmacy team to the medical and nursing staff made me feel like I was already part of the team. It was a clear indication that it would be an amazing and supportive environment.”

When reflecting on her time at BMC, she recalls it being one of the most challenging years she has completed but remains grateful for the confidence she gained from her time here and credits her ability to face challenges head on to the rigor of the program she completed. “One of the most significant things that I learned at BMC is that I was capable of more than I ever thought possible. It was one of the most challenging years that I had experienced. There were many times that I did not think I would be able to accomplish everything that I was asked to do. However, I looked back and surprised myself which instilled a new confidence in me. This shift has encouraged me to pursue bigger opportunities and welcome challenges that once may have felt overwhelming.”

What has Dr. Bastow been up to since leaving Boston Medical Center? After completing her residency training in 2012, Dr. Bastow returned to Florida to begin her career at Sarasota Memorial Health Care System as an Emergency Medicine Clinical Pharmacy Specialist. In 2016, Dr. Bastow moved on to UChicago Medicine as a Clinical Pharmacy Manager. She has continued to grow professionally into her current position at UChicago as the Assistant Director of Clinical Pharmacy Services as well as the PGY-2 director for both the Emergency Medicine and Critical Care programs.



Dr. Samantha Bastow MBA, PharmD, BCPS

SCHOOL OF PHARMACY:

Palm Beach Atlantic University, West Palm Beach, FL

PGY-1 TRAINING:

Sarasota Memorial Health Care System, Sarasota, FL

CURRENT POSITION:

Assistant Director of Clinical Pharmacy Services at UChicago Medicine; Director of PGY-2 Emergency Medicine Pharmacy Residency; Director of PGY-2 Critical Care Pharmacy Residency

QUESTION & ANSWER

WHAT WAS ONE OF YOUR MOST MEMORABLE EXPERIENCES AT BMC?

There were so many memorable experiences, but one that really stands out to me was a complex toxicology patient who presented in the trauma room in cardiac arrest. The reason that it stands out is not necessarily because of the patient case itself, but more so because that was when I first truly realized the level at which medicine and pharmacy are practiced at BMC. The case was one where there was no clear evidence-based guidance on how to best manage the patient. With this in mind, I witnessed the EM pharmacist, physician, and nurse discuss the best strategy based on the mechanism of the involved toxins, the patient presentation and case reports they had been able to recall reading. This was early in my year and I remember thinking about how fortunate I was to be in an environment where



I was surrounded by innovative, intelligent and collaborative practitioners. The strong teamwork that I witnessed set the precedent for how I hoped to always interact with my multi-disciplinary colleagues.

high-grade achievement as their goal. As a resident, it is much more than completing all of the requirements to “pass” – it is taking advantage of every experience that is offered because it will allow you significantly more opportunities in your career. As a resident, we often don’t realize that being able to speak about one experience can be the difference in obtaining an incredible job. It may not have been an experience that was originally built into the program, but it can be one that puts them at an advantage over other candidates as they pursue career opportunities. Every experience matters, no matter how insignificant it may seem in the moment. They need to be present and understand the significance of each activity or discussion that they are a part of.



that functions as a well-oiled machine, but I get the most satisfaction out of repairing or initiating service lines. It is a great feeling to look at a blank canvas and create new opportunities, followed by implementing and measuring the impact of those opportunities.

Over the past several years I have been able to do this in a few areas. Outside of pharmacy, my greatest accomplishment is my family. Many people strive for “work-life balance”. Although I do not necessarily think that perfect “balance” is achievable, it is definitely possible to have work and personal life complement one another. The time that I spend with my family is full of amazing experiences and so it does not feel like the time is short outside of work because the quality of time we spend is incredible. We recently added another daughter to our family which has made our days together even fuller.

WHERE DO YOU SEE PHARMACY PRACTICE HEADING IN THE NEXT 20 YEARS?

I believe that clinical decision support informatics and artificial intelligence will continue to grow and replace some of the fundamental tasks performed by pharmacists. With this in mind, direct patient care activities will likely become more of a focus. As provider status is passed through the legislature, or through collaborative practices, pharmacists may be able to improve access to healthcare for many patients.

WHEN YOU AREN'T WORKING, WHAT DO YOU DO TO UNWIND AND RELAX?

My family is my passion. I love spending time with my husband and daughters; this is when I am most relaxed. We love to travel together and try new restaurants around the city. I also find my escape in books I typically read a few every week!



WHAT HAS MOTIVATED YOU TO CONTINUE TO ADVANCE YOUR CAREER?

At BMC I was able to witness pharmacists who practiced at the top of their license. This was very inspiring to me. The positions that I have taken since residency have been in areas where I had the opportunity to either create a new pharmacy service line or expand services so that the pharmacists that I work with have the opportunity to practice at the very top of their license as well.

HAVE YOU ALWAYS BEEN INTERESTED IN BEING A RESIDENCY PROGRAM DIRECTOR? WHAT WAS YOUR PATH TO BECOMING THE DIRECTOR FOR TWO RESIDENCY PROGRAMS?

Yes, I have always been interested in serving as an RPD. It is an incredible opportunity to be able to play a role in the development of residents. As RPD I can sit with a resident at the beginning of the year, hear their dreams and goals, put challenges in place to help them achieve those goals, and then support them along the way. At the end of each year, I get the

joy of seeing the residents looking back and being surprised at their abilities and accomplishments. As far as becoming the RPD of both programs, it happened organically. I first became RPD of the critical care program and then we decided to develop a new emergency medicine program. Because there would be so many similarities with rotations, preceptors and other learning objectives, it made sense for me to develop the EM program by using the CC program as the starting point. By having one person over both programs, it has allowed them to be complementary to one another and the residents from both programs work very closely together.

WHAT ADVICE DO YOU GIVE YOUR INCOMING RESIDENTS FOR HOW TO BE SUCCESSFUL STARTING THEIR POST-GRADUATE TRAINING?

It is important to be flexible and open to new opportunities. The transition from student to resident can be challenging in that students are used to going by a strict syllabus and often have

WHAT ADVICE WOULD YOU GIVE TO A RECENT RESIDENCY GRADUATE LOOKING TO START THEIR CAREER?

WHERE you work is often much more important than WHAT position you are taking. Residents can often focus on trying to obtain their “dream job” after residency. I have noticed that dreams often shift and the first job that you take is not always the one that you envisioned. However, if you become part of an organization with a culture that is supportive and innovative, you can create new positions and advance your career without needing to change the place that you work.

WHAT HAS BEEN YOUR GREATEST ACCOMPLISHMENT IN PHARMACY? WHAT ABOUT YOUR GREATEST ACCOMPLISHMENT OUTSIDE OF PHARMACY?

I have had so many great experiences during my short pharmacy career so far. Perhaps one of the greatest opportunities I have had was to develop and implement new pharmacy service lines from the ground up. It is always great to join a team

NEW PGY-2 INTERNAL MEDICINE

In July 2019, Boston Medical Center's Pharmacy Residency Program expanded its post-graduate training to include a PGY-2 residency in Internal Medicine. Our pharmacy department has had a strong presence in the internal medicine space including over 16 decentralized clinical pharmacists and an extensive transition of care program supported by medication reconciliation technicians and pharmacy technician liaisons. The addition of a PGY-2 in Internal Medicine was a seamless addition to our post-graduate training. It allowed opportunities for residents to develop advanced pharmaceutical care skills and to become an educator in the area of internal medicine.

As part of this program, residents have the opportunity to complete rotations in General Internal Medicine I & II, Internal Medicine III in Renal, Geriatric or Cardiology subspecialty, Medical ICU, Infectious Diseases/Antibiotic Stewardship, Inpatient Hematology/Oncology, Clinical Pharmacy Administration, General Pediatrics, Acute Care Surgery, and Family Medicine with an academic focus. Unique to this program, residents will be involved with Boston Medical Center's Complex Care Management program where they will follow a panel of high-risk patients longitudinally throughout the year to assist with medication-related needs. The resident will work with an interdisciplinary team of nurses and community wellness advocates to establish a relationship with their patients

through clinic visits, check-in phone calls, and home visits.

The Residency Program Director for this program is Melissa Bachman, PharmD, BCPS. Melissa received her Doctorate of Pharmacy at the University of the Sciences in Philadelphia in 2009, completed her PGY-1 residency at Hahnemann University Hospital in 2010 and has been working at Boston Medical Center for seven years. Our first PGY-2 Internal Medicine Resident is Nikitha Patel, PharmD. Nikki received her Doctorate of Pharmacy at Virginia Commonwealth University in 2018 and recently completed her PGY-1 residency this year here at Boston Medical Center.



BOSTON MEDICAL CENTER

RESIDENT EMOTIONAL SUPPORT TEAM (REST)

ANNUAL REPORT 2018-2019

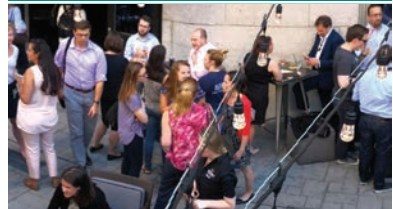
BOSTON MEDICAL CENTER

RESIDENT EMOTIONAL SUPPORT TEAM (REST)

ANNUAL REPORT 2018-2019

JULY 2018:

Resident Welcome Event



We started the year with a resident welcome event at the Precinct Kitchen + Bar in Back Bay. We were able to rent out their outdoor patio and get to know each other over drinks and yummy appetizers! It was a great venue to kick off the year. Residents were excited to meet and greet their advisors and mentors for the year!

SEPTEMBER 2018:

Parlee Farms & Annual REST Retreat



We were lucky enough to return to Parlee Farms in Tyngsboro, MA, the family farm of one of our preceptors, Anne Parlee! We were able to pick many pecks of apples and come back to Boston to make anything and everything apple related. The apple pies, apple muffins, apples with pork, applesauce, and apple butter were all delicious! For the past few years, they've also had a "cut your own flower" field, so we made sure to bring home buckets of fresh flowers as well! A big thank you to Anne's family for giving us all the apples and cider donuts we could eat!

OCTOBER 2018:

Hiking at the Blue Hills & Pharmacy Week



Preceptors and residents enjoyed the beautiful fall colors and a skyline view of Boston from the top of the Blue Hills. Pups were included in the invitation and were equally excited to be outdoors for beautiful views and exercise! It's hard to believe such a picturesque area and seemingly remote location is so close to BMC!

NOVEMBER 2018:

Volunteering at the BMC Rooftop Farm



Boston Medical Center features a functional rooftop farm that our Teaching Kitchen and Food Pantry use to grow fresh vegetables every summer and fall. This year we volunteered to help close up the Rooftop Farm for the winter. It was a chilly November morning, but we were able to stay warm with all of our hard work! One benefit from volunteering (other than a great time) is that we got to take home fresh vegetables for our families and pets! Many are interested in helping re-open the farm again in the spring!

JANUARY 2019:

Escape Room



In January, we escaped the cold weather and went to Room Escapers Boston. Residents and preceptors were randomly split into two teams to tackle two different escape rooms: Panacea or Organized Chaos. Each team had 60 minutes to work together and find clues to escape their rooms. Both preceptors and residents had a blast successfully solving both rooms. One team was faster than the other, however, they shall remain nameless.

APRIL 2019:

Skyzone



BMC residents and preceptors put forth a valiant effort against a feisty team of pre-teens but were unfortunately defeated in the end. Even still, they had a great time running, bouncing, diving, and flipping off of the trampolines. They all kept they're grippy socks to remember the fond memories that were made that evening! Skyzone is becoming a resident favorite amongst the REST events and slowly brewing into an annual tradition.

AUGUST 2018:

MSHP Welcome Cruise



In August, both residents and preceptors went on a Boston harbor cruise on the Spirit of Boston! This was an event organized by the Massachusetts Society of Health-System Pharmacists (MSHP) for pharmacy residents to meet and greet local residents in Boston and network. Look how snazzy our residents looked!

SEPTEMBER 2018:

Parlee Farms & Annual REST Retreat



The rain didn't stop BMC's residents and preceptors from venturing over to Northeastern University to participate in the annual retreat! This was a day filled with team building events, a scrumptious potluck lunch (featuring Brian Spoelhof's famous buffalo chicken mac & cheese), a lecture from our preceptor development committee on different learning styles and finished off with a friendly game of "Pharmily Pheud" organized by the REST committee!

OCTOBER 2018:

Hiking at the Blue Hills & Pharmacy Week



We had an event filled pharmacy week this year. Both pharmacists and technicians enjoyed a free meal provided by BMC every day of the week. There were also week-long games that were played, such as "guess the baby photo" and "don't say the word". The week finished off with a yummy cookie bake-off! Our critical care pharmacists, Will Vincent, Megan Feeney, and Kim Ackerbauer, took home the award for the best twinning picture!

DECEMBER 2018:

Mid-Year & Secret Santa



Residents and preceptors had a great time at ASHP's annual Mid-Year. In addition to educational CEs and poster presentations, our PGY-2 Critical Care resident Molly Merz organized the first BMC alumni event! It was great catching up with old residents and preceptors and seeing how BMC contributed to their fulfilling careers!



As if Mid-Year wasn't enough fun, the residents also had their own secret Santa event at Matt and David's house! Look at how happy Olaf looks! He may have had too much peppermint schnapps.

MARCH 2019:

Annual Casino Night & Alternate Weekends



An annual favorite, residents and preceptors were excited to dress up in their finest attire for BMC's 3rd Annual Casino Night. Some of our very own BMC preceptors were dealers for blackjack, roulette, and craps. Residents showed off their gambling skills and (not surprisingly) took home 1st, 2nd, and 3rd place.



Also, in March, we supported one of our musically talented preceptors, Brian Spoelhof. Brian's band, Alternate Weekends, played at Thunder Road in Somerville. In our humble opinion, they were much better than the bands they opened for. Both preceptors and residents had a fun time jamming out. Look at Brian's focus as he tackles that solo! Nice guitar, Brian.

JUNE 2019

Graduation!

Residents, preceptors, and staff gathered to celebrate the graduation of the 2018-2019 residency class. It was a great night of food, fun and of course an amazing roast video of the preceptors!

RESIDENCY EXCELLENCE AWARDS

THE ANNUAL PHARMACY RESIDENCY EXCELLENCE AWARDS celebrate the residents and preceptors that embody the skills, drive, and spirit of the BMC residency program. The recipients of these awards are individuals that have excelled in their particular area of practice through continued dedication to our mission of serving our patients, improving the quality of care we provide and providing an exceptional education without exception. We congratulate the 2018-2019 Boston Medical Center Residency Excellence Award winners below.

RESIDENT OF THE YEAR AWARD:



MAKENNA SMACK, PharmD
Dr. Smack received the 2018-2019 Resident of the Year Award because of her dedication to the care of our oncology patients during her PGY-2 Oncology Pharmacy Residency. She is revered by the Pharmacy Department, Advanced License Providers, MDs, and nurses that she worked with. Makenna was a phenomenal peer leader as BMC’s first Chief Resident. She was able to create strong working relationships and a sense of leadership as she advocated for her colleagues. Makenna will be missed after taking an amazing job as an Oncology Clinical Specialist at MD Anderson in Texas.

SCHOLARSHIP PROJECT OF THE YEAR:



MATTHEW GIRGIS, PharmD
Dr. Girgis received the 2018-2019 Scholarship Project of the Year Award for his leadership in converting BMCs vancomycin per pharmacy protocol from trough-based monitoring to AUC based management. Matt provided countless seminars, kinetic lunch and learns and other interventions to create comfort amongst our staff. His project successfully lowered the total vancomycin exposure and improved clinical care. His project was presented at MAD-ID and picked up by Contagion for an interview! Dr. Girgis’ work has improved how we provide MRSA therapy for our patients will have a lasting impact on the care that we provide! Dr. Girgis will be returning home to Toronto, Canada where he will be an infectious diseases pharmacist with Trillium Health Partners.

RESIDENCY EXCELLENCE AWARDS

DANA WHITNEY PRECEPTOR OF THE YEAR AWARD:



**BRIAN SPOELHOF, PharmD, BCPS
CLINICAL SPECIALIST LEAD – Medicine**
The Dana Whitney Preceptor-of-the-year award is given annually to a BMC preceptor that the residency class recognizes for excellence in residency education. This year’s award recipient was Dr. Brian Spoelhof. Dr. Spoelhof was recognized for his ability to turn any opportunity into a teaching moment. His commitment to precepting and teaching never ceased. Dr. Spoelhof often stayed late to spend time in the resident office doing whiteboard teaching, debating clinical controversies, assisting residents with clinical work, patient care, and project work. He took the time to explain various concepts and topics spanning many clinical areas. In the 2018-2019 year, he was a residency advisor, rotation preceptor, oversaw many residents’ educational conferences and patient case presentations and always found time to be a mentor. Each resident felt a connection to Dr. Spoelhof in some way and felt their year benefited by having him as part of it. Dr. Spoelhof will be missed as he transitions to another opportunity at Virginia Commonwealth University Hospital.

“STRONG WORK” AWARD:



**LISA LY, PharmD
CLINICAL PHARMACIST II**
The “Strong Work” award was developed to acknowledge a pharmacist who maintains a positive attitude and is always supportive of the residents. The 2018-2019 residency class honored Dr. Lisa Ly with the award this year! Dr. Ly is a constant support to residents for operations both during staffing and decentralized shifts. She is always available to answer questions and takes the extra effort to not just do the work but to teach the residents. Most notably, Dr. Ly volunteered to retrain all the residents before the start of their pharmacist-in-charge (PIC) shifts and even created a helpful guide for common operational issues. She always has a smile on her face and residents appreciated her support and training throughout the year. Congratulations Dr. Ly on the “strong work” award!

ADDITIONAL RESIDENT AWARDS AND RECOGNITIONS:



**2019 MASSACHUSETTS SOCIETY OF HEALTH-SYSTEM PHARMACIST
ANNUAL MEETING POSTER SESSION WINNERS.**
Natalija Farrell, PharmD, BCPS, DABAT – Won first place for her poster titled “Prevalence of “one pill can kill” medications in blister packs: a single center study”.
Megan Trombi, PharmD – Won second place for her poster summarizing her yearlong quality improvement project titled, “Quality improvement initiative to optimize pain management and opioid prescribing for surgical patients at discharge”.

BE EXCEPTIONAL AWARD WINNERS!

The BMC “Be Exceptional Award” is handed out to individuals and teams that have demonstrated significant value to patients and the organization in support of our mission, vision, and values. This year the Department of Pharmacy was honored to have two teams that won awards and two individuals that were part of another award-winning team.

BOSTON MEDICAL CENTER EMERGENCY MEDICINE PHARMACY TEAM:



In the busiest Emergency Department in New England and top ten in the country, the ED Pharmacy Team is at the center of everything. This team has been based out of a satellite pharmacy in the ED since 2007. They have been providing high-level, comprehensive pharmacy services 24/7 since 2014. Over this time, they have become an integral member of the trauma team and sought-after resource for anything from medication reconciliation to drug and dosing recommendations to toxicology consults. The ED Pharmacy Team is doing more for our patients than ever as they have grown exponentially from one pharmacist in 2007 to six pharmacists and seven medication reconciliation technicians in 2019. The ED Pharmacy Team makes a positive impact on quality goals and the patient experience on a day-to-day basis.

BOSTON MEDICAL CENTER ANTIMICROBIAL STEWARDSHIP TEAM:



In their roles as leaders of our Antimicrobial Stewardship Team (AST), Drs. Tamar Barlam and Karrine Brade have a significant impact on quality, cost, and compliance. The AST has a broad mandate to promote the appropriate use of the right anti-infectives in the right patients for the right amount of time. Given the ubiquity of anti-infective use, Drs. Barlam and Brade have an impact on the care we provide in every corner of the hospital.

Through the work of the AST, Drs. Barlam and Brade improve quality by promoting the appropriate use of anti-infectives at a patient and systems level. Their team reviews patients every day to ensure they receive the correct anti-infective for their infectious diseases. The AST routinely recommends changing antibiotics to better treat a bloodstream infection, narrowing antibiotic regimens to prevent resistance, and adding antibiotics when additional agents are needed to better treat an infection. Through their interaction with myriad providers across the hospital, they elevate the level of care we deliver by educating prescribers, pharmacists, and nurses keeping many of our patients safe every day through work that they do.

Drs. Barlam and Brade act as stewards of Boston Medical Center’s resources. They routinely review new anti-infectives that come to the market to ensure that we use only the most cost-effective therapies. If a high-cost anti-infective is added to our formulary, the AST ensures that it is used in the most appropriate patients. As a result of these efforts, Boston Medical Center uses fewer antibiotics per patient day than other academic medical centers in the city of Boston.

Finally, Drs. Barlam and Brade have worked tirelessly over the years to put us in compliance with CMS and Joint Commission standards for antimicrobial stewardship. We are leaders in antimicrobial stewardship and exceeded all standards even before the publication of the standards within the past several years.

Boston Medical Center Campus Consolidation Team: Dr. Joy Vreeland (Director of Inpatient Pharmacy) and Michelle Cote (Pharmacy Automation Systems Specialist) were members of a large interdisciplinary team that won a Be Exceptional award for their herculean work on the campus consolidation project. This team moved 200 patients across two city blocks over two months without incident!



2019-2020 PHARMACY RESIDENTS



PGY-1 PHARMACY RESIDENTS



PGY-2 PHARMACY RESIDENTS

2019-2020 BOSTON MEDICAL CENTER PGY-1 CLASS



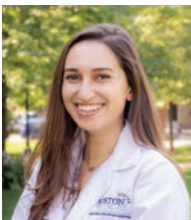
Morgan Eiting, PharmD

Dr. Morgan Mabey Eiting is from Salt Lake City, Utah. She graduated from Virginia Commonwealth University in 2019. Her areas of interest include emergency medicine, solid organ transplant, and internal medicine. In her spare time, she likes camping, baking, and brunching with friends. An interesting fact about her is that she is always looking to try new things, most recently having been dog sledding in Alaska.



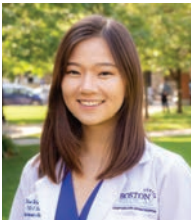
Jonathan Nazari, PharmD

Dr. Jonathan Nazari is from Chicago, Illinois. He graduated from the University of Illinois at Chicago in 2019. His areas of interest include ambulatory care and specialty pharmacy. In his spare time, he enjoys trying new restaurants, shopping, and traveling to different countries. An interesting fact about Jon is that he has made pharmacy friends from all over the world through his involvement with the International Pharmaceutical Students' Federation (IPSF)!



Meissane Benbrahim, PharmD

Dr. Meissane Benbrahim is from Marlboro, New Jersey. She graduated from Northeastern University in 2019. Her areas of interest are critical care and emergency medicine. In her spare time, she enjoys cooking new dishes, running, and knitting. A fun fact about her is that she was born in Paris, France.



Winnie Wan, PharmD

Dr. Winnie Wan is from Edison, New Jersey. She graduated from Northeastern University in 2019. Her clinical areas of interest include internal medicine, infectious diseases, and critical care. In her spare time, she enjoys trying new restaurants, playing board games, and spending time with friends and family. A fun fact about her is that she is quite the talented sleep talker.



Stephani Halloran, PharmD

Dr. Stephani Halloran is from Scranton, Pennsylvania. She graduated from Virginia Commonwealth University School of Pharmacy in Richmond, Virginia in 2019. Her areas of interest include internal medicine, critical care, and oncology. In her spare time, she likes to travel, exercise, hike, ski/snowboard, and volunteer for medical outreach programs. An interesting fact about her is that she has seen a volcano erupt twice, once in Costa Rica and once in Italy!



Luke Jennings, PharmD

Dr. Luke Jennings is from Pittsburgh, Pennsylvania. He graduated from the University of Pittsburgh in 2019. His areas of interest include internal medicine and critical care. In his spare time, he likes to run, do yoga, and read. An interesting fact about him is that he got to meet Hillary Clinton!

2018-2019 BOSTON MEDICAL CENTER PGY-2 SPECIALTY RESIDENCY CLASS



Danielle Burton, PharmD PGY-2 Emergency Medicine

Dr. Danielle Burton is from Weymouth, Massachusetts. Before completing her PGY-1 residency training at Boston Medical Center, she received her Doctor of Pharmacy from Northeastern University in 2018. Danielle loves podcasts and documentaries, her dog Lola, going to the gym and discovering new restaurants and coffee shops. Her professional interests in Emergency Medicine include trauma, emergency/disaster response, toxicology, and caring for vulnerable populations. Danielle's favorite thing to do is travel and her biggest bucket list item is that she wants to visit all 50 states and 7 continents!



Jasmine Patel, PharmD PGY-2 Oncology

Dr. Jasmine Patel is completing her PGY-2 Oncology Pharmacy residency here at BMC and is originally from Union, New Jersey. She graduated from Ernest Mario School of Pharmacy at Rutgers University in New Jersey in 2018 and recently finished her PGY-1 residency at Hartford Hospital in Connecticut. In her spare time, she enjoys cooking, working out, dancing, and trying new restaurants. Jasmine also loves Face Timing her friends and family and taking weekend trips to visit them.



Nikitha Patel, PharmD PGY-2 Internal Medicine

Dr. Nikitha Patel is from Princeton, New Jersey. She graduated from Virginia Commonwealth University School of Pharmacy in 2018 and completed her PGY-1 residency this past year here at Boston Medical Center. Her clinical interests include benign hematology, cardiology, and transitions of care. In her spare time, she enjoys dancing, hiking and Netflix binging. An interesting fact about Nikki is that she has ailurophobia.



Nicholas Rebold, PharmD PGY-2 Infectious Diseases

Dr. Nicholas Rebold is from Fairfax, Virginia and grew up in Maui, Hawaii. He graduated from the University of Virginia in 2014 and from Virginia Commonwealth University School of Pharmacy in 2018 and completed a PGY-1 at Boston Medical Center. His areas of interest include infectious disease and general medicine. In his spare time, he likes to play video and board games, eat out at restaurants, and hang out with his co-residents. An interesting fact is that he likes to play video games in French!



Shyam Patel, PharmD PGY-2 Critical Care

Dr. Shyam Patel is from East Hartford, Connecticut. He graduated from the University of Connecticut in Storrs, Connecticut in 2018 and completed his PGY-1 at UCONN Health. His clinical and practice interests include critical care, emergency medicine, and academia. In his spare time, he enjoys exploring new cities, working out, and spending time outdoors. Shyam loves music and is looking to attend, and perhaps play, at gigs in Boston.



Rimmel Khan, PharmD PGY-2 Ambulatory Care

Dr. Rimmel Khan is from Hershey, Pennsylvania. She graduated from MCPHS University in Boston, MA in 2016 and completed her PGY-1 residency at Reading Hospital in Reading, PA in 2017. Her clinical interests include HIV, cardiology, and endocrinology. In her spare time, she enjoys traveling, reading, practicing yoga, and spending time with family and friends. Rimmel has moved around a lot and has lived in five different states!

NEW PRECEPTORS AND PRECEPTOR ACTIVITIES

The 2018-2019-residency year continued to build our pharmacy department as a whole while increasing our preceptor pool and diversity at Boston Medical Center.



Sameer Afghani, PharmD
Clinical Specialist, Medicine
Education: Doctor of Pharmacy, University of Texas at Austin College of Pharmacy (2016)
Residency: PGY-1, Texas Tech School of Pharmacy – Texas Health Harris Methodist Hospital Fort Worth (2017); PGY-2 Internal Medicine, Phoenix VA Healthcare System (2018)
Memberships: ASHP, MSHP, TSHP
Practice/Research Interests: Neurology, cardiology, general internal medicine
Rotations Offered: Internal medicine, neurology/stroke
Fun Fact: His favorite Sesame Street character is Snuffleupagus.



Kyle Bertram, PharmD, BCACP
Ambulatory Care Clinical Specialist, Endocrinology
Education: Doctor of Pharmacy, Northeast Ohio Medical University (2014)
Residency: PGY-1, New Hanover Regional Medical Center (2015); PGY-2 Grady Health System (2016)
Memberships: ACCP, MSHP, NEIAP, EndHepCMA
Practice/Research Interests: Health Literacy, Population Health, Pharmacy Practice Advancement, Chronic Disease State Management
Rotations Offered: Ambulatory Care – Endocrinology
Fun Fact: He enjoys traveling and is working to visit every US state.



Shubha Bhat, PharmD, MS, BCACP
Ambulatory Care Clinical Specialist, Gastroenterology
Education: Doctor of Pharmacy, Northeastern University (2012); Master of Science, University of Colorado (2018)
Residency: PGY-1, Boston Medical Center (2013); PGY-2 Ambulatory Care, University of Illinois at Chicago (2014); Ambulatory Care Outcomes Research Fellowship, University of Colorado (2016-18)
Memberships: ACCP, ASHP, MSHP
Practice/Research Interests: HCV, IBD, implementation and evaluation of clinical pharmacy services
Rotations Offered: Hepatitis C and Inflammatory Bowel Disease ambulatory
Fun Fact: She has a Dalmatian!



Vivian Ho, PharmD, BCPS
Clinical Specialist, Medicine
Education: Bachelor of Science, Nutritional Sciences, University of Florida (2007); Doctor of Pharmacy, University of Florida (2012)
Memberships: ACCP, MSHP, ASHP
Practice/Research Interests: Adult General Medicine, Cardiology, Transitions of Care
Rotations Offered: Internal medicine
Fun Fact: Forded across deep riverbeds driving to Þórsmörk, Iceland.



Elena Serpico, PharmD, BCCCP
Clinical Specialist, Surgical ICU
Education: Doctor of Pharmacy, Duquesne University School of Pharmacy (2016)
Residency: PGY-1, Massachusetts General Hospital (2017), PGY-2 Critical Care, Massachusetts General Hospital (2018)
Memberships: SCCM, ASHP, MSHP
Practice/Research Interests: Critical care, Infectious diseases, Emergency Medicine
Rotations Offered: Surgical ICU



Julie Slomkowski, PharmD, BCPS
Clinical Specialist Lead, NICU and Pediatrics
Education: Doctor of Pharmacy, Massachusetts College of Pharmacy and Health Sciences (2011)
Residency: PGY-1, Yale-New Haven Hospital (2012); PGY-2 Pediatrics, Yale-New Haven Hospital (2013)
Memberships: PPAG
Practice/Research Interests: Neonatal abstinence syndrome, neonatal analgesia and sedation
Rotations Offered: Pediatrics, NICU, Pediatric ICU, Pediatric ID
Fun Fact: She has been to 46 states!

POSTERS, PRESENTATIONS, PUBLICATIONS

CRIT CARE/SURGERY

Kimberly Ackerbauer, PharmD, BCCCP
Clinical Coordinator, Critical Care
Director, PGY-2 Critical Care

Publications:

- Hunt TV, DeMott JM, **Ackerbauer KA** et al. Single-dose sodium polystyrene sulfonate for hyperkalemia in chronic kidney disease or end-stage renal disease. Clin Kidney J. 2018; In Print.
- Hirschy R, **Ackerbauer KA**, et al. Metoprolol vs. diltiazem in the acute management of atrial fibrillation in patients with heart failure with reduced ejection fraction. Am J Emerg Med. 2018; In Print.
- Soriano V, Gurnani PK, **Ackerbauer KA**. The effect of obesity on vancomycin serum concentrations in patients receiving continuous venovenous hemofiltration. Poster accepted at the ACCP Annual Meeting; Seattle, WA. Anticipated October 2018

Megan Feeney, PharmD, BCCCP
Clinical Specialist, Cardiac ICU

Publications:

- Feeney ME**, Lindsey DE, Vazquez DE, Porter K, Murphy CV, et al. (2019) A Risk Factor Analysis for MRSA Ventilator-Associated Pneumonia to Guide Empiric Therapy in the Surgical Intensive Care Unit. J Infect Dis Epidemiol 5:075.
- Feeney ME**, Thompson M, Gerlach AT, et al. Evaluation of Rectal Vancomycin Irrigation for Treatment of Clostridioides difficile Infection in Patients Post-Colectomy for Toxic Colitis. Surgical Infections. March 2019.

Elena Serpico, PharmD, BCCCP
Clinical Specialist, Surgical ICU

Poster:

- Serpico E**. Vasopressin medication use evaluation in adult intensive care units of a tertiary academic medical center. Boston Medical Center. ASHP Summer Meeting 2019.

William R. Vincent III, PharmD, BCCCP
Clinical Coordinator, Surgery

Poster:

- Trombi M, **Mordino J**, **Patolia R**, **Vincent W**. Quality improvement initiative to optimize pain management and opioid prescribing for surgical patients at discharge. MSHP Annual Meeting 2019. Won runner up poster.

Publications:

- Vincent WR III**, Huiras P, Empfield J, et al (4) **Horbowicz KJ**. Controlling postoperative use of i.v. acetaminophen at an academic medical center. American Journal of Health-System Pharmacy. 2018;75(8):548-555.

Mark Douglass, PharmD
NEU Faculty

Poster:

- Skenyon C, Merkel M, **Douglass M**. Identifying the Top Career Preferences Among Current US Pharma Students and Factors Having the Greatest Impact on Career Outlook. Poster presentation at American Pharmacists Association Annual Meeting, 2019
- Malladi R, Scott S, **Douglass M**. Analysis of Clinical Trials with Pharmacist-led Behavioral Interventions. Poster presentation at American Pharmacists Association Annual Meeting, 2019

- Ryes R, Merkel M, Meninger S, Scott S, Monpara A, Pastisano A, **Douglass M**. Identifying appealing career qualities and influences on PharmD students' preferences for careers in the pharmaceutical industry from a national survey. Poster presentation at ASHP Midyear 2018
- Moon C, Panicker J, Zheng J, **Douglass M**, et al. The efficacy of digital therapeutics of CDC NDPP vs non-CDC NDPP in improving clinical outcomes in patients at risk for or diagnosed with type 2 diabetes. Poster presentation at Northeastern University RISE, 2019.
- Merkel M, Skenyon C, Sheth J, Monopara A, Partisano A, **Douglass M**. Factors influencing PharmD students' post-graduate career preferences identified by a national survey. Poster presentation at ASHP Midyear 2018
- Carlson A, Divall M, **Douglass M**, et al. Development and Evaluation of a General Medicine Elective Course. Poster presentation at AACP 2018
- Woolley A, Carlson A, Sibicky S, Lancaster J, **Douglass M**. An EPIC alternative: Using an ePortfolio system to create mock electronic medical records. Poster presentation at AACP 2018.

Publication:

- Douglass M**, Moy B. Evaluation of the impact of a social media-focused intervention on reducing mental health stigma among pharmacy students. Ment Health Clin. 2019;9(3):110-115

Dong Tu, PharmD, BCPS, BCCP
Clinical Specialist, Cardiology

Poster:

- Hall J., Caputo J., **Tu D.**, **Bachman M**. Bridging anticoagulation in patients with atrial fibrillation at Boston Medical Center: A retrospective medication use evaluation. Poster presentation at ASHP Midyear 2018.

AMBULATORY CARE

Shubha Bhat, PharmD, MS, BCACP
Clinical Specialist, Gastroenterology

Publications:

- Bhat S**, Zahorian T, Robert R, Farraye FA. Advocating for Patients with Inflammatory Bowel Disease: How to Navigate the Prior Authorization Process. Inflamm Bowel Dis.
- Bhat S**, Kroehl ME, Trinkley KE, et al. Evaluation of a Clinical Pharmacist-Led Multidisciplinary Antidepressant Telemonitoring Service in the Primary Care Setting. Popul Health Manag. 2018;21(5):366-372.
- Bhat S**, Kroehl M, Yi WM, et al. Factors influencing the acceptance of referrals for clinical pharmacist managed disease states in primary care. J Am Pharm Assoc (2003). 2019;59(3):336-342.
- Bhat S**, Kansal M, Kondos GT, Groo V. Outcomes of a Pharmacist-Managed Heart Failure Medication Titration Assistance Clinic. Ann Pharmacother. 2018;52(8):724-732.
- Soric MM, Paxos C, Dugan SE, et al (11) **Bhat S**. Prevalence and Predictors of Benzodiazepine Monotherapy in Patients with Depression: A National Cross-Sectional Study. J Clin Psychiatry. 2019;80(4):0-0.

Katelyn O'Brien, PharmD, BCPS, CDE
Clinical Specialist, Ambulatory Care
General Internal Medicine Clinics
President-elect, MPhA

POSTERS, PRESENTATIONS, PUBLICATIONS

Anne Hennigan, PharmD, BCPS, BCGP
Clinical Specialist, Ambulatory Care
Anticoagulation and Geriatric Clinics

Poster:

- Warren Backman MBBS, Vivian Chan MD, Mariuxi Viteri Malone MD, Hossein Sadrzadeh MD, **Anne Hennigan PharmD**, Lisa Caruso MD. Excessive Duration of Oral Iron Supplementation among Ambulatory Older Adults. Section of Geriatrics, Boston University School of Medicine, Boston Medical Center. AGS Annual Meeting 2019.

EMERGENCY MEDICINE

Natalija Farrell, PharmD, BCPS, DABAT

Clinical Coordinator, Emergency Medicine and Toxicology
Director, PGY-2 Emergency Medicine

Publications:

- Anwar M, Turner M, **Farrell N**, Zomlefer WB, McDougal OM, Morgan BW. Hikers poisoned: Veratrum steroidal alkaloid toxicity following ingestion of foraged Veratrum parviflorum. Clin Toxicol (Phila). 2018;56(9):841-845.
- Farmer BM, Hayes BD, Rao R, **Farrell N**, Nelson L. The Role of Clinical Pharmacists in the Emergency Department. J Med Toxicol. 2018;14(1):114-116.

Poster:

- Farrell N**, **Hamilton S**, **Gendron B**, **Ryan P**, Corio J, **Lookabill S**. Prevalence of "one pill can kill" medications in blister packs: a single center study. Poster presentation at NACCT 2018 and MSHP Annual Meeting 2019.
- Fett D**, **Hamilton S**, **Horbowicz K**, **Farrell N**. Novel method to provide take-home naloxone kits at no cost to at-risk emergency department patients in the absence of government funding. Poster presentation at MSHP Annual Meeting 2019.
- Lamb M**, **Gendron B**, **Horbowicz K**, **Farrell N**. Implementing influenza vaccinations in the emergency department. Poster presentation at Vizient at ASHP Midyear 2018 and MSHP Annual Meeting 2019.
- Farrell N**, Sulis C, **Fett D**, **Vreeland J**, Nentwich L. An emergency department's response to a local hepatitis A outbreak. Poster presentation at MSHP Annual Meeting 2019 and SAEM NERDS 2019.
- Fett D**, **Gendron B**, **Ryan P**, **Lookabill S**, **Farrell N**. Implementation of an emergency department-initiated opioid dependence treatment pathway. Poster presentation at MSHP Annual Meeting 2019.
- Leonard J, Panahi S, Arnold L, **Farrell N**. Women in pharmacy leadership. Poster presentation at Northeastern University RISE, 2019.
- Ferguson K**, **Farrell N**, Arnold L. Four factor prothrombin complex concentrate for warfarin-associated intracranial hemorrhage with initial INR 1.4-1.9: a case series. Poster presentation at ACCP 2018.

Bryan Gendron, PharmD, BCPS

Clinical Specialist, Emergency Medicine

Publication:

- Altawil Z, **Gendron BJ**, Schechter-Perkins EM. Topical use of tranexamic acid for the management of post-procedural rectal bleeding. The American Journal of Emergency Medicine. 2019;37(1):173.e3-173.e4.

Posters:

- Gendron B**, **Kebadian D**, Nentwich L, Hebert P, **Farrell N**. Implementation of a pharmacist-driven urine culture callback process in the emergency department. Poster presentation at MSHP Annual Meeting 2019.
- Corio J**, **Gendron B**, Arnold L, Baker W, Sloan M, Phull P, Nguyen V, Smith K, **Farrell N**. Direct Oral Anticoagulant Protocol for Venous Thromboembolism Treatment Initiation in the Emergency Department. Poster presentation at IHI National Forum 2018.

Patrick Ryan, PharmD, BCPS

Clinical Pharmacist II, Emergency Medicine

Poster:

- Ryan P**, **Gendron B**, **Lookabill S**, **Fett D**, **Farrell N**. Pharmacist interventions on emergency department boarding patients. Poster presentation at MSHP Annual Meeting 2019.

ONCOLOGY

David Hughes, PharmD

Clinical Specialist, Hematology/Oncology

Publication:

- Dennis M, Maoz A, **Hughes D**, et al. Bortezomib ocular toxicities: Outcomes with ketotifen. AM J Hematol. 2019 Mar;94(3):E80-E82.

INFECTIOUS DISEASES

Karrine Brade, PharmD, BCPS, BCIDP

Clinical Coordinator, Medicine
Director, PGY-2 Infectious Diseases

Publications:

- Heil EL, Claeys KC, Mynatt RP, et al (5) **Brade K**. Making the change to area under the curve-based vancomycin dosing. Am J Health Syst Pharm. 2018;75(24):1986-1995.

Poster:

- Yamasaki H, Fan KP, **Brade KD**. Prescribing patterns for skin and soft tissue infections at an academic medical center. MAD-ID 2019 Annual Meeting.
- Girgis M**, **Amin S**, **Brade K**. Hospital wide implementation of vancomycin area under the curve/minimum inhibitory concentration (AUC/MIC) dosing at a large academic medical center. Poster presentation at MSHP and MAD-ID, 2019.
- Jones K, **Brade K**, **Farrell N**, **Kebadian D**, **Ryan P**. Improved Vancomycin Initial Dosing Prescribing Practices in the Emergency Department of a Large Academic Level 1 Trauma Center. Poster presentation at ASHP Midyear 2018

MANAGEMENT

Kanan Shah, PharmD

Clinical Manager, Medicine

Presentations:

- Battisti L**, **Shah K**, **Alva S**; Evolution of Pharmacy Team's Role in Population Health Management. May 15th, 2019. MSHP Annual 2019.



GET IN TOUCH WITH BMC PHARMACY RESIDENCY PROGRAMS!

Email: BMCPharmacyResidency@bmc.org or
connect via Twitter - @BMCPharmRes



CONSIDERING BECOMING A BMC RESIDENT?

We'll see you at the Midyear showcase!

Dec. 9, 2019 1:00 – 4:00 PM Booth 4547

CENTER
BOSTON
MEDICAL

One Boston Medical Center Place • Boston, MA 02118 • 617.638.8000 • BMC.org