



All-In Committee

APPE Scholarship Program

Program Guide and Application Information 2024-2025

About the All-In Scholarship

PURPOSE

Currently, certain groups are significantly underrepresented in the profession of pharmacy. In 2016, 53.2% of pharmacy degree holders were white Americans, 24.6% were Asian, 7.3% were African Americans, 4.4% Hispanics, 0.2% Native Hawaiians and 0.3% American Indians. The percentage of underrepresented minorities (URM) receiving pharmacy degrees has remained almost constant since the 1980's. The All- Scholarship program has been created to help achieve our goal of diversity and inclusivity in the pharmacy department.

Description

Students can select a customizable APPE rotation experience with two consecutive 6-week APPE rotations at Boston Medical Center (BMC). See the rotations offered below.

Internal Medicine
Advanced Institutional
Advanced Community
Ambulatory Care *
Electives **

A stipend of up to \$10,000 will be provided for common living expenses in the City of Boston as well as transportation to and from Boston.

*Ambulatory clinics include primary care and specialty (e.g., Complex Care Management, Cardiology, Gastroenterology, Endocrinology, Infectious Disease, Renal Transplant, and Anticoagulation)

**Other elective rotations include critical care, emergency medicine, infectious diseases, and pediatrics

ELIGIBILITY CRITERIA

Prospective APPE student at an accredited pharmacy school located outside of the New England region

Identify as an underrepresented minority in pharmacy such as

- African American
- Hispanic or Latino
- Native Hawaiian
- American Indian

APPLICATION MATERIALS

Requirements

- Current resume or CV
- Complete application form
- Letter of intent
- Unofficial school transcript

Please submit completed application form with all required documents by:

December 11, 2023.

Application link below:

[All-In APPE Scholarship Form](#)

Candidates will be notified about the outcome of their application by mid-January 2024.

About the All-In Scholarship FAQs

FREQUENTLY ASKED QUESTIONS

1) *How many students are selected each year?*

Three scholarship recipients had been selected for Academic Years 2022-23 and 2023-24. Two scholarship recipients were selected in the inaugural year of the All-In Committee APPE Scholarship Program in 2021. A total of 5 APPE students (including the 2 scholarship recipients) completed rotations at BMC during Academic Year 2021-22 as a result of All-In recruitment. The number of students selected each year will depend on funding, interest, and preceptor availability.

2) *How does the selection process work?*

The All-In Committee devised an application process with particular attention to limiting biases and celebrating DEI. Qualifying candidates should submit an online application using the [link](#) provided. Candidates are scored based on their application with the greatest emphasis placed on pharmacy achievement, pharmacy experience, and commitment to diversity, equity, and inclusion. Top candidates are invited for a virtual interview with the Committee. Students interested in completing an APPE rotation at BMC outside of the scholarship program should contact the All-In Committee and their institution's experiential education office for more information.

3) *Are there opportunities to complete a rotation at BMC if I am not selected for the scholarship?*

Yes, absolutely. Please contact the All-In Committee via email and our team will contact the experiential office to accommodate. The All-In Committee encourages program participants and anyone interested to consider BMC for valuable training and career opportunities.

4) *Where can I find more information?*

Email us or visit our BMC All-In Webpage [here](#). Please join us at any of our online informational sessions taking place. All attendees must register in advance using the link below.

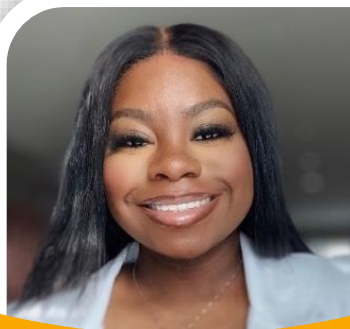
November 2, 2023 from 12:00 - 1:00 pm EST via Zoom

November 8, 2023 from 7:00 - 8:00 pm EST via Zoom

November 14, 2023 from 3:00 - 4:00 pm EST via Zoom

Sign-up here: <https://forms.gle/NcsyiKX9k9y4RcW89>

About the All-In Students



Adeola Adesuyi, MS

Shenandoah University
PharmD Candidate- Class of '24
Scholarship Recipient



Eugene Agho, BS

University of Maryland Eastern Shore
PharmD Candidate- Class of '24
Scholarship Recipient



Abigail Owusu

Florida Agricultural & Mechanical University
PharmD Candidate- Class of '24
Scholarship Recipient



Thanh-Liem (John) Vu

Roseman University
PharmD Candidate- Class of '24
All-In Participant

ALL-IN Alumni

Camryn Joseph
Erica Hall
Darian Ramos
Obi Dimunah
Rebekah Torchon
Laurel Uhomba
Brittney Cherestal

About the All-In Committee

MISSION

- To promote Boston Medical Center's core value of "Many Faces Create Our Greatness" within our pharmacy department
- To develop, mentor, and educate the next generation of culturally competent pharmacists and promote excellence through leadership and teaching

CORE VALUES

- Cultural awareness, diversity, and inclusion
- Patient-centered care
- Teamwork
- Mentorship
- Excellence

MEMBERS

Maya Espada, BA, MSPH
Chief of Staff, Pharmacy

Christopher Fagbote, PharmD, BCACP
*Clinical Pharmacy Specialist – Ambulatory Care
Complex Care Management*

Jessica Fortune-Chery, PharmD, BCACP
*Clinical Pharmacy Specialist – Ambulatory Care
Complex Care Management*

Kevin Horbowicz, PharmD, BCPS
Associate Chief Pharmacy Officer, Inpatient

Kelsey Norman, PharmD, BCCP, BCACP, BCPS
*Clinical Pharmacy Specialist – Cardiology
PGY2 Ambulatory Care Residency Program Director*

Ana Safri, PharmD, MBA
Clinical Pharmacy Specialist – Cardiology

Sarita Weekes
*Program Manager for Pharmacy Education
Administration*



STATEMENT

Boston Medical Center (BMC) serves a diverse patient population, therefore a diverse provider demographic across all healthcare disciplines is key to providing the highest quality of care. Given our diverse patient population at BMC, we are uniquely equipped to provide substantial learning opportunities that foster growth, inclusivity, and healthcare excellence to the next generation of pharmacists. We strive to ensure that all backgrounds are adequately represented in the pharmacy field.

About Boston Medical Center

FAST FACTS ABOUT BOSTON MEDICAL CENTER (BMC)

Unwavering in its commitment to the community, BMC is a private, not-for-profit, 514-bed, academic medical center located in Boston's historic South End. The primary teaching affiliate for Boston University School of Medicine, BMC is the largest safety-net hospital and busiest trauma and emergency services center in New England. More than half of our patients come from underserved populations, such as the low-income and elderly, who rely on government payers such as Medicaid, the Health Safety Net, and Medicare for their coverage; 32 percent do not speak English as a primary language.

KEY HIGHLIGHTS

1. Academic medical center
2. Largest safety-net hospital
3. Busiest trauma and emergency services center in New England
4. Boston University School of Medicine Affiliate
5. Numerous outreach programs such as health screenings, smoking cessation, preventive food pantry, and interpreter services



The Joint
Commission



American Heart
Association
American Stroke
Association



GREENOVATE
CITY of BOSTON



CERTIFICATION
Meets standards for
Comprehensive Stroke Center



ABOUT THE CITY

Boston is the home of health care innovation, scientific advancement, and more.

1. Pharmaceuticals- home to almost 1,000 biotechnology companies
2. Sports- home of the Boston Marathon, Red Sox, Patriots, and the Bruins
3. History- home of the Freedom Trail, Museum of Fine Arts, and Duck Tours
4. Art & Entertainment- home of the Boston Calling Music Festival, Boston Common (America's first park), Boston Symphony Orchestra & the Boston Ballet, and the New England Aquarium



Scholarship Application Link:

Apply: [All-In APPE Scholarship Form](#)



For questions and general inquiries:

Email: DG-BMCALLIN@bmc.org

Web: [BMC All-In Committee](#)

Info Session Registration: [Link](#)

Residency Program Information Link:

[Pharmacy Residency Programs](#)

Follow the BMC Residency Twitter - [@BMCPHarmRes](#)