

A NEW ERA

PHARMACY RESIDENCY
2021 ANNUAL REPORT

BOSTON
MEDICAL
CENTER

BOSTON
MEDICAL
CENTER





BOSTON
MEDICAL

Dear prospective applicant:

As we move into the summer (at the time of writing), I believe it is important to reflect on the essential role that Boston Medical Center (BMC) Health System played in the vaccination campaign against COVID-19. Not only did we serve as a site for Pfizer's adult and pediatric vaccine studies, but we played a critical role in addressing vaccine hesitancy and administering COVID-19 vaccines to our underserved communities. During our peak immunization campaign, BMC offered vaccinations at four on-site locations and five off-site locations in collaboration with local partnerships. The Pharmacy Department was critical to this endeavor. Not only did we distribute vaccines to all of these clinics, including pre-drawn syringes at our on-site locations, but we provided staff to administer vaccines, as well. I was proud to have played a part, albeit small, in this campaign. Seeing the smiles and hint of optimism on our patients' faces as they waited in line for a vaccine brought significant meaning and fulfillment to my job this past spring.



Despite the all-consuming nature of our COVID-19 response, our Pharmacy Department quietly had an exciting year. Most important, we kicked our diversity, equity, and inclusion efforts into overdrive following the murder of George Floyd in the summer of 2020. To build on work began in 2019, we formed the BMC All-In Committee. The mission of the All-In Committee was to be explicit in connecting our department's actions with our value of "many faces create our greatness." Please be sure to read the feature story about the All-In Committee in this annual report. Until you do, I won't bury the lead. We were able to create a scholarship to support two underrepresented minority students to complete 12 weeks of advanced pharmacy practice experience rotations at BMC. We had nearly 40 applicants from 15 different schools of pharmacy to select two recipients. While our work is far from over, this was an important achievement for us to celebrate.

We continued to expand our residency program despite the challenges posed by COVID-19. We on-boarded our first non-traditional PGY1 residents this year. As a practice-focused residency training program, this expansion allows us to provide career opportunities for existing staff and be explicit about our belief that the modern day hospital pharmacist must be able to demonstrate mastery of all aspects of health-system pharmacy practice – operational and clinical. We also added a second PGY2 Ambulatory Care resident to the roster, bringing the total number of residents to fourteen. And we're not done yet. Our department continues to explore other growth opportunities for our residency program, which is a major driver of the care we provide our patients.

Thank you for choosing Boston Medical Center as a potential home for your residency training. Enjoy the 2021 Annual Report.

Sincerely,

A handwritten signature in black ink, appearing to read "Kevin J. Horbowicz".

Kevin J. Horbowicz, PharmD, BCPS
Associate Director – Inpatient Clinical Pharmacy Services

All-In Committee

Boston Medical Center (BMC) is an urban academic medical center and the largest safety net hospital in New England that serves a diverse patient population. Its surrounding community is a melting pot of people from multiple ethnic backgrounds. One of BMC's core values is "many faces create our greatness." To support this value within the pharmacy department, the All-In Committee was established in a "grass roots" fashion. The mission of the committee is to promote diversity, equity and inclusion in the profession of pharmacy. The committee recognizes that diverse provider demographics across all healthcare disciplines is key to providing the highest quality of care. Therefore, it strives to ensure that all backgrounds are adequately represented in pharmacy practice.

To work towards this goal, an All-In scholarship was created for students that self-identify as an underrepresented minority in pharmacy to complete 12-weeks of advanced pharmacy practice experiential rotations at BMC. The first-annual scholarship provides a stipend of \$10,000 for cost of living expenses during the rotation. The rotation experience is uniquely designed to the student's interest and future career aspirations. It includes two 6-week or three 4-week rotations within any of the following care areas: ambulatory care (clinics including primary care or complex care

management), anticoagulation, cardiology, critical care, emergency medicine, endocrinology, gastroenterology, infectious diseases, pediatrics and renal transplant. Outside of the rotation experience, the scholarship recipient is partnered with a longitudinal mentor from the All-In Mentorship program to coach clinical performance, facilitate professional growth and provide a support system.

Upon initiation of the All-In scholarship, targeted outreach was conducted with schools of pharmacy at Historically Black Colleges and Universities to promote BMC. With virtual opportunities and social media engagement, the committee was able to participate in multiple showcases to highlight the scholarship to pharmacy students. The committee's proactiveness was an immense success. The scholarship received 39 applicants from 15 schools of pharmacy across the country. With such a strong applicant pool, each with their own story that embraced involvement in diversity and inclusion efforts, a single candidate could not be chosen. Therefore, the All-In Committee was honored and fortunate enough to award two full scholarships.

In addition to the scholarships, the All-In Committee is currently organizing team-based cultural competency training for the Pharmacy Department. The departmental

All-In Committee

training aims to target intentional and/or unintentional behavioral indignities that communicate negative attitudes towards stigmatized or culturally marginalized ethnic groups. With the integral push for more minority representation, the committee wants to ensure that the department is culturally competent to support this effort. Additionally, the committee looks forward to sharing the “All-In Approach” with the pharmacy community during a platform presentation at ASHP Midyear 2021.

Overall, BMC is very proud to have initiated the All-In campaign that seeks to develop, mentor and educate the next generation of culturally competent pharmacists. The committee is looking forward to the start of the two All-In scholarship awardees’ rotational experiences in September 2021 as well as creating a network to support their future endeavors.



ALUMNI SPOTLIGHT

DR. KATE CABRAL

Kate P. Cabral, Pharm.D., BCPS, BCCP is an Associate Professor of Pharmacy Practice at Albany College of Pharmacy and Health Sciences (ACPHS) in Albany, New York. She also maintains a clinical practice with Capital Cardiology Associates in Albany, NY.

Dr. Cabral earned her Doctor of Pharmacy degree from Northeastern University in Boston, Massachusetts. She completed a pharmacy practice residency (2004-2005), as well as a cardiology specialty residency (2005-2006), at Boston Medical Center.

Dr. Cabral practiced as a clinical pharmacy specialist in cardiology at Boston Medical Center and a clinical pharmacy specialist in anticoagulation at Maine Medical Center, initiating inpatient anticoagulation services, before returning to New York.

When starting at ACPHS almost 10 years ago, she rounded in the CCU at Albany Medical Center prior to initiating clinical pharmacy services at Capital Cardiology Associates in Albany, NY.

Currently, she serves as Director of the PGY2 Cardiology Residency at ACPHS/Capital Cardiology Associates.



QUESTION & ANSWER

WHAT WAS YOUR MOST MEMORABLE EXPERIENCE AT BMC?

I have so many memorable experiences from my time at BMC! The ones that stand out most, all relate back to the friendships and relationships I formed while there. The philosophy at BMC has always been “work hard, play hard.” (I think introduced by John Marshall?!) My best memories correspond to both sides of that statement... working hard to learn as much as I could for each rotation, figuring out an effective time management plan, late night data collection in our resident office space, and middle of the night aminoglycoside pharmacokinetic pages which were dreaded but really taught me so much! And some of my favorite memories were having fun with my co-residents and staff... resident picnics, conference trips, and happy hours! . I'll never forget cleaning out my office space at the end of my PGY2, realizing just how much I'd learned and gained in that short 2 years.

WHAT HAS MOTIVATED YOU TO CONTINUE TO ADVANCE YOUR CAREER?

The desire to help people was one of the reasons I applied to pharmacy school. I continue to be motivated by my patients and providing them the best care possible. I am motivated to think of new ideas, create new clinical services, advocate for and advance our profession. I think it was instilled in my training at BMC to constantly think outside the box, think about what else a pharmacist can do, and push our role forward. It motivates me to instill this desire into my trainees. I also am motivated by the incredible team of healthcare providers I work with, accepting challenges and continuing to show them what a pharmacist can do. Lastly, I am motivated to show my daughters that a woman can have a successful, rewarding career while also maintaining ‘mothering’ as top priority.

WHAT ADVICE DO YOU GIVE STUDENTS WHEN THEY ARE PURSUING A RESIDENCY?

1. Have an open mind.
2. Try to relax... what's meant to be will be.
3. Network!
4. Apply to a range of programs, in terms of their competitiveness.
5. Spend time on your letter of intent!
6. Remember that you are interviewing them just as much as they are interviewing you.
7. Smile and be yourself!
8. Remember pharmacy is a small world (be mindful of professional interactions along the entire way!)
9. Tell your story- everyone has a unique path.
10. Follow your gut instincts.

WHAT ADVICE WOULD YOU GIVE A RECENT RESIDENCY GRADUATE LOOKING TO START THEIR CAREER?

Don't be afraid to take on an opportunity that scares you. Be confident in your training. Say yes to opportunities, the more you say yes to, the more that will come your way. Create a niche for yourself- do a project on a topic, present on that topic, publish a review article on that topic and before you know it....you are an expert on that topic! Don't be afraid to get out of your comfort zone a bit, take a job in another state- check out how pharmacy is practiced somewhere else!

HAVE YOU ALWAYS WANTED TO BE A FACULTY MEMBER AT A PHARMACY SCHOOL?

No! I thought that at some point I might be interested in academia but I wanted to gain practical, clinical experience first. Nevertheless, I always kept my hands in teaching and precepting in all of my post-graduate positions. The transition from working in a hospital to academia was strange at first... I kept asking my Department Chair where I should punch in? Or what projects I should focus on first. I discovered that the increased autonomy and flexibility took some getting used to, however, now is one of the aspects I value most in my current position.

WHAT HAS BEEN YOUR GREATEST ACCOMPLISHMENT IN PHARMACY? OUTSIDE OF PHARMACY?

I would say in pharmacy, receiving a number of teaching awards during my time here at NU, and developing a new residency program were definitely in the top of my list. Outside of pharmacy, I would say winning an international volleyball championship is one moment I will always cherish (I mean, I am 6'5" after all so I guess it was somewhat expected)?

WHERE DO YOU SEE PHARMACY HEADING IN THE NEXT 20 YEARS?

I really hope that within the next few years, the work of pharmacists will be recognized with provider status. Pharmacists have truly stepped up during this pandemic and need to be recognized for it, as well as the critical role we play on the healthcare team. I think that receiving provider status, and being able to be compensated appropriately, will be a game changer for our profession. It will allow us to build further collaborative, clinical roles and duties to improve access and provide optimal care to our patients and communities. The pandemic has also highlighted pharmacists fulfilling roles through telehealth, which has been effective in many ways, so perhaps we will continue to build upon this and other creative, new ways to offer direct patient care. I think that ambulatory care pharmacy will grow and community pharmacy practices will morph into providing more direct patient care services.

WHEN YOU AREN'T WORKING, WHAT DO YOU DO TO RELAX?

Most of my non-working time is hanging with my girl squad (my 3 daughters who spice up any task or activity), my husband and our insane quarantine black lab puppy. I love to garden, cook, listen to music, spend time with friends and find art projects very therapeutic! I've become borderline obsessed with making my kids' Halloween costumes....maybe I'll be a costume designer someday.

HEMATOLOGY/ONCOLOGY GRANTS

Three grants for a total of \$350K were awarded to our Hematology/Oncology Pharmacy team over this past year, with more initiatives currently under review.

“Improving Biomarker Driven Precision Therapy Access For Disproportionate Minority And Low-Income Patient Population In The Era Of Covid-19” Pfizer Grant

David Hughes, PharmD, BCOP, Jasmine Patel, PharmD, BCOP, Bhavesh Shah, RPh, BCOP, Jose Acevedo, MD, and Umit Tapan, MD were awarded a \$250,000 grant from Pfizer to carry out their project. Biomarker based testing has become a standard to guide treatment decisions for metastatic non-small cell lung cancer (NSCLC) and is crucial for both early stage/resected and late-stage patients. Over the past several years, numerous new markers have been identified and subsequently, targeted therapies have been developed to focus on these biomarkers.



It is imperative for all members of the lung cancer treatment team (oncologists, pathologists, pharmacists, nurse practitioners, nurses, and physicians' assistants) to understand new data and recognize the complexity of managing these patients. In community practice, there are several knowledge gaps that may exist and education on treatment considerations and supportive/toxicity management is imperative in this growing field. Within our patient population at BMC, approximately 70% of patients are underserved minorities and over 50% are below the federal poverty line. This compounds operational barriers that may prohibit optimal care for patients.

The overall goal of this project is to help identify critical gaps in standard biomarker testing and help improve understanding of targeted based therapies for patients with NSCLC. Integration of the BMC specialty pharmacy can bring unique perspective on how to prevent financial delay to patients. This educational series will focus on the biomarker-based approach and discuss ways to overcome identified barriers that may interfere with testing. It will also address primary literature and clinical pearls needed to attain the best outcomes for all patients with NSCLC, regardless of social determinants.

HEMATOLOGY/ONCOLOGY GRANTS

“Creating A Hematologic Malignancy And Supportive Care Biosimilar Educational Toolbox For Healthcare Providers In The Covid-19 (Sars-Cov-2) Era.” Pfizer Grant

Alison Stebbings, PharmD, BCOP and Adrian Zobniw, PharmD, BCOP were awarded a \$48,500 grant from Pfizer to carry out their project. This project aims to increase provider awareness and competence with the uptake of biosimilars, specifically within the hematology and supportive care space. This educational initiative will address potential barriers to implementing biosimilars and provide insight on how to overcome these barriers with institutional-specific data.

To carry out this project, they are currently conducting a medication use evaluation on biosimilar use in supportive care at BMC. They are examining both clinical and financial outcomes related to the conversion from a reference long acting granulocyte colony-stimulating factor product (Neulasta) to a biosimilar product (Udenyca), and then from one biosimilar product (Udenyca) to a new biosimilar product (Fulphila). They are also examining prescribing trends and clinical outcomes related to biosimilar use in supportive care during the COVID-19 pandemic at BMC. This information will be presented at the institutional, local and regional level through platform presentations and with the additional goal of publishing their findings.

“Building And Implementing An Oncology Biosimilar Educational Curriculum For A Strategically Targeted Audience To Help Bridge Current And Future Gaps Of Biosimilar Adoption Within Oncology” Radhika Jhaveri, Pharmd, Bcop And Bhavesh Shah, Rph, Bcop Were Awarded \$50,000 For This Educational Grant.

This project aims to develop educational activities with an overarching goal that will complement and/or enhance the understanding of biosimilars and their use in patients with cancer for trainees and seasoned health care professionals. To accomplish the goal, we plan to create educational activities/curriculum for a targeted audience such as physicians, advanced practice providers, nurses, pharmacists and health care providers training and already practicing. The educational activities will be delivered as a part of ongoing routine continuing educational activities (ex: nursing competency, grand rounds, cross functional residency/fellowship educational events etc.) across multiple disciplines involved in managing patients with cancer. We will also examine and share our institution's biosimilar adoption process as well as clinical outcomes related to adoption of biosimilars across multiple cancers through presentations at healthcare meetings or via publication.



BOSTON MEDICAL CENTER

RESIDENT EMOTIONAL SUPPORT TEAM (REST)

ANNUAL REPORT 2020-2021

AUGUST 2020: Virtual Happy hour

Which Resident am I?

- ▶ My first concert was No Doubt
- ▶ My French bulldog's name is Lunesta
- ▶ If I was famous, it would be because of my Instagram account
- ▶ My worst style choice was teasing my hair

The 2020-2021 year kicked off with a Zoom happy hour. We got to know our new residents a little better with a game of "Guess Who: Resident Edition," and showed off our artistic talents with a game of "Drawful."

OCTOBER 2020:

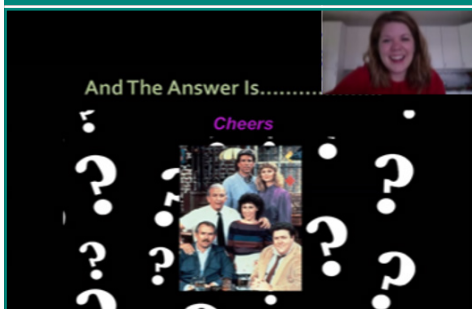
So You Think You Know Your Coworker - Pharmacy Week



At long last, it was time for a resident-driven activity. The esteemed delegates, Lynnette and Spencer set up this month's event "So you think you know your coworker". Participants paired up with their work-spouses for a series of trivia games. Turns out, we might not know each other as well as we thought.

October also means Pharmacy Week at Boston Medical Center. The department celebrated with snacks, trivia, and a twin day that truly showed the department's devotion to the craft. Once again, we have to applaud Megan and Kim for going where only one man has gone before.

SEPTEMBER 2020: Trivia



The Chill Pills (aka BMC Pharmacy Residency team) attempted their first virtual Stump! Trivia. Although we may not have placed first (or second or third), we were proud of our efforts and learned some fun facts.

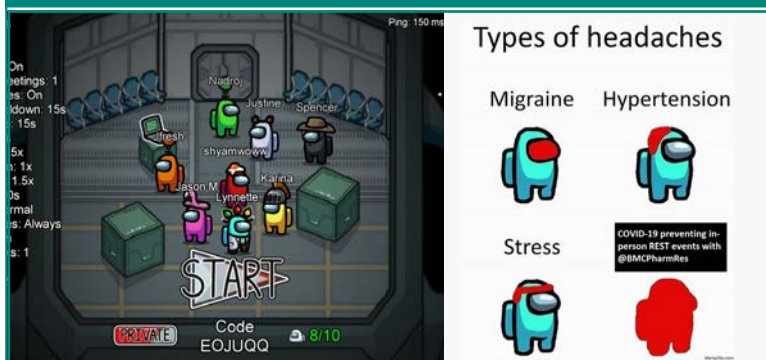
BOSTON MEDICAL CENTER

RESIDENT EMOTIONAL SUPPORT TEAM (REST)

ANNUAL REPORT 2020-2021

DECEMBER 2020:

Among Us:



Types of headaches

Migraine



Stress



Hypertension



COVID-19 preventing in-person REST events with @BMCPharmacies

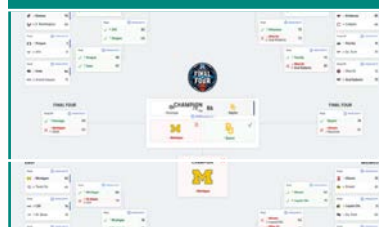


In December, the REST committee led by Shyam, hosted a virtual Among Us night. Among Us is a “mafia-esque” game in which up to 10 players are stranded on a crashed space ship. The ship must be fixed for the crew to survive. The twist? 2 players are imposter aliens whose sole purpose is to sabotage the repair and kill off the crewmates. It’s a race against time as the imposters and crewmates battle for survival.

Over the course of 3 hours, countless games would be played, with the Imposters usually outsmarting Crewmates. By the end of the evening, participants were proficient enough to spot lies and those faking their tasks. Ultimately, the true fun surrounded Lynette having the odd luck of never being assigned an Imposter role for over 3 hours!

MARCH 2021:

March Madness



If there’s one thing all pharmacists love, it is Sports. Sarah organized this classic yearly tradition for the inhabitants of BN-05a. For some *cough* Jess *cough* their bark was bigger than their bite. Ultimately, it was Cardiology guru Dong who had his heart in the game.

FEBRUARY 2021

Game Night



In February, Jasmine and Eleanor led a virtual game night and happy hour(s) for the monthly REST committee event. Participants were split into three game groups: Code Names, Jackbox TV, and Joking Hazard. There was great representation from both the inpatient and ambulatory care preceptor groups, and most of the residents also joined in to unwind after a stressful afternoon of last-minute MSHP abstract revisions and submissions! As attendees started to sign off for the evening, the remaining participants congregated in the Joking Hazard breakout room. There were a lot of laughs as participants competed to complete the funniest three-panel comic strip!

Thank you to everyone who attended!

APRIL 2021

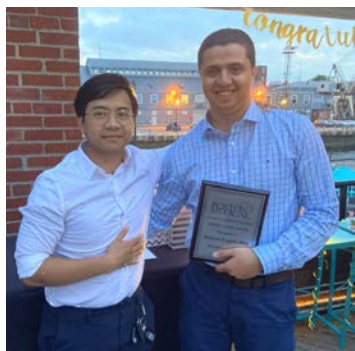
Yoga



The REST committee sponsored a Zoom yoga event instructed by Allysa Donnally, a hatha yoga instructor with over a decade of experience. The hour session was a “moving meditation” that involved whole body stretching and connecting breathing to physical movement. It was a relaxing and recharging event for all who attended!

RESIDENCY EXCELLENCE AWARDS

STRONG WORK AWARD



HESHAM RAGHIB, PHARMD

Dr. Hesham Raghib was selected for the “Strong Work” award by the residency class of 2020-2021. All the PGY1s and most of the PGY2s have worked with Hesham during their central staffing shifts or when calling down to the central pharmacy for help when on decentralized shifts. Hesham played a significant role in the residents’ training and adjustment to the central pharmacy workflow at the start of the year. Furthermore, he has continued to remain an excellent resource for the residents. Every time a resident calls down to the central pharmacy and speaks to him, he has gone above and beyond to help the residents with what they need. He always keeps the patients in mind in all that he does and truly embodies the skills and dedication of a strong and caring pharmacist.

PRECEPTOR OF THE YEAR



MEGAN FEENEY, PHARMD, BCCCP

The Dana Whitney Preceptor of the Year Award was awarded to Dr. Megan Feeney. BMC’s 2020-2021 residency class nominated her based on her dedication to the program. Dr. Feeney precepted five residents and multiple students in the CCU and MICU over the year. Residents appreciated the time she devoted to her learners, her patient demeanor, and her commitment to BMC’s patients. Dr. Feeney served as the chair of the professional development committee this year in which she organized and moderated numerous helpful career planning sessions. Dr. Feeney also served as the project advisor for a longitudinal resident quality improvement project. The residents acknowledged that Dr. Feeney consistently showed her support by attending every pharmacy grand rounds presentation and case conference.

The 2020-2021 BMC Pharmacy Residency Class would like to congratulate Dr. Feeney on her new position as the BMC Critical Care Pharmacy Residency Program Director. Thank you for being an exemplary pharmacist and preceptor!

RESIDENCY EXCELLENCE AWARDS

RESIDENT OF THE YEAR



The resident of year award is presented to the BMC resident who demonstrates a positive attitude, provides excellent patient care, strives for continuous growth and supports the education of the next generation of pharmacy learners. This year, in contrast to other years, the resident of the year award was given to two very deserving pharmacy residents. Please find excerpts from each of these excellent residents' nomination forms.

MONIQUE PAYNE-CARDONA, PHARM.D, BCPS – PGY2 EMERGENCY MEDICINE

Monique Payne-Cardona is strong clinically and has performed exceptionally on rotations. Emergency Department (ED) nursing and physician staff regularly provide unsolicited feedback on how helpful she is, how she went the extra mile to improve patient care, and how we should create a position to hire her. Her strong performance extends beyond patient care. She has turned in high quality work early for all assignments, which has enabled her to be involved in additional research projects (i.e. ED Suboxone Take Home Kits vs Discharge Rx, Women in Pharmacy Leadership). Monique routinely seeks out additional activities to improve patient safety, staff education, and pharmacy department engagement. In addition to her Recruitment Committee work, Monique has been an active member of our All-In Committee. She helped at our virtual showcases at Historically Black Colleges and Universities, screened and interviewed applicants for the All-In Scholarship, and will be presenting a platform presentation called "The All-In Approach to Improving Diversity and Inclusion within Pharmacy Practice" with Chris Fagbote and Jessica Fortune-Cherry at ASHP Midyear 2021. Additionally, Monique brings an upbeat, pleasant, positive outlook and energy to every interaction with nurses, physicians, students, co-residents, and pharmacists. She has served as an excellent role model for APPE students and residents and embodies our BMC values.

MEISSANE LEE, PHARM.D – PGY-2 AMBULATORY CARE, CHIEF RESIDENT

I cannot speak highly enough of the work Meissane has done this year. Through her leadership as Chief Resident, professional involvement on the steering committee for New England Institute of Ambulatory Care Pharmacists (NEIAP), mentoring co-residents/students, and her scholarship activities all while prioritizing patient care exemplifies her maturity and dedication. She has been recognized countless times by her peers for her work as Chief by helping with our resident's transition through extra support and attention. She has been described by her peers as always being patient, having a very positive attitude, and serving as a great role model. She keeps candy at her desk for her co-residents and will come down to the resident office during her lunch break to fill it up if it's running low. She has demonstrated strong communication skills as Chief and is always smiling. The feedback from preceptors has highlighted her strengths as a clinician and dedication to her patients. Preceptors have described Meissane as an exceptional clinician and communicator. Her work ethic and commitment to patient care exhibits a professionalism and poise that is well beyond her years. Meissane's care is exemplified in patients telling family members about her, to building the trust of a patient who did not trust the health care system, or when patients continue to ask to still see Meissane after she has finished a rotation. Other patient examples are when a patient told her this was the first visit he felt listened to after seeing multiple specialists for his DM, or another patient of hers who was admitted and called Meissane specifically to ask her to visit during their admission. I could continue to list the stories and feedback that has been shared with me. It is truly inspiring to see the amount of people she has impacted through her work. She has been dedicated to see the success and continued growth of our residency programs. Her work throughout this year has demonstrated an ability to collaborate with multiple disciplines, actively engage in high quality patient care, and mentor young professionals. People tend to gravitate towards Meissane, whether it's her peers, patients or preceptors. She is an authentic individual that gains your trust quickly.

RESIDENCY EXCELLENCE AWARDS

SCHOLARSHIP PROJECT OF THE YEAR

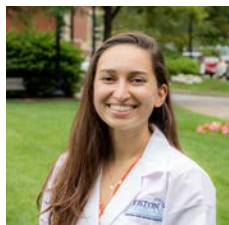
IMPACT OF IMPROVING THE MEDICATION PRIOR AUTHORIZATION PROCESS IN AN AMBULATORY ONCOLOGY INFUSION CLINIC - LED BY LYNETTE HENSHAW, PHARM.D



The Scholarship-Project-of-the-Year award is bestowed upon a resident project that exemplifies excellence in advancing patient care and/or improving the medication use system at Boston Medical Center. This year's award was received by Lynette Henshaw PGY2 in oncology for her work on the project titled "Impact of improving the medication prior authorization process in an ambulatory oncology infusion clinic". This was a yearlong effort to improve the medication prior authorization process in the BMC infusion clinic. After many "deep dives" into the reimbursement data it was

identified that BMC was losing approx. \$100,000 a month (> \$1M/year) in drug reimbursement due to either medication PAs not being done, or not being done in a timely fashion. Lynnette worked with providers, pharmacy liaisons, and the oncology pharmacy team to educate them on the new PA process. Since the launch of the new PA process in October of 2020, the average loss is down to \$10,000 a month in revenue (compared to \$100,000/month previously). If insurance does not pay, technically the patient is responsible for payment, which can create a HUGE stress for patients. At BMC, if patients cannot afford the cost of their treatment, BMC covers the cost entirely. This improvement has created a smooth workflow for providers, nurses, and pharmacy. Not only is this QI project a huge achievement for institutional initiatives (preventing large revenue losses) but also impacts our mission to take care of cancer patients by eliminating unnecessary stress.

CAREER



Meissane Lee, PharmD
Clinical Specialist –
Ambulatory Care,
Gastroenterology at
Boston Medical Center,
Boston, MA



Pawlose Ketema, PharmD
Clinical Specialist –
Infectious Diseases
at Sinai Hospital of
Baltimore, Baltimore, MD



Lynnette Henshaw,
PharmD
Clinical Specialist –
Hematology/Oncology
at Boston Medical
Center, Boston, MA



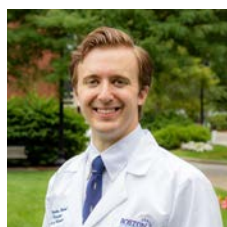
Ryan Zabrosky, PharmD
Clinical Specialist –
Internal Medicine at
University of Pittsburg
Medical Center,
Harrisburg, PA



Ava Cascone, PharmD
Clinical Specialist
– Neurocritical
Care at Boston Medical
Center, Boston, MA



Monique Payne-Cardona,
PharmD, BCPS Clinical
Specialist – Emergency
Medicine at Resurrection
Medical Center,
Chicago, IL

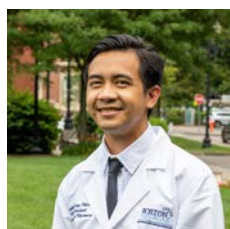


Joshua Hayden, PharmD
Clinical Pharmacist
at Miriam Hospital,
Providence, RI

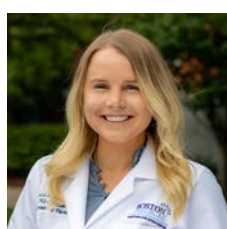
PGY2



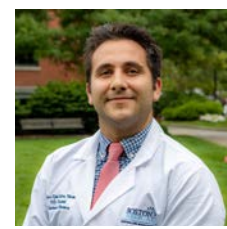
Jordan Koloski, PharmD
Non-Traditional PGY-1 at
Boston Medical Center



Sopheaktra Kong,
PharmD Non-Traditional
PGY-1 at Boston Medical
Center

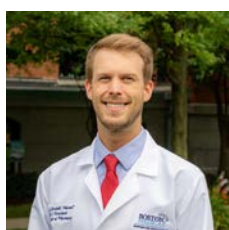


Jessica Sullivan, PharmD
PGY-2 Cardiology at
University of Michigan
Health System



Spencer Sutton, PharmD
PGY-2 Infectious
Diseases at Boston
Medical Center

NON-TRADITIONAL PGY1 (CONTINUATION)



Gideon Berdahl, PharmD
PGY-2 Critical Care at
Boston Medical Center



Jessica Freydman,
PharmD GY-2 Oncology
at Boston Medical Center

2021-2022 BOSTON MEDICAL CENTER PGY-1 PHARMACY RESIDENTS



Emily Plasencia: PGY1

Dr. Plasencia is from Sacramento, California. She graduated from University of California, San Francisco in 2021. Her clinical areas of interest are emergency medicine and infectious diseases. In her spare time, she enjoys kickboxing, doing yoga, and watching Netflix. A fun fact about Emily is that she spent all her summers in Mexico during her childhood!



Danielle Famularo: PGY1

Dr. Famularo is from Hanover, Massachusetts. She graduated from the University of Rhode Island in 2021. Her clinical areas of interest include critical care, emergency medicine, and pain management. In her spare time she enjoys exercising, trying new restaurants, and spending time with friends. A fun fact about Danielle is that she's halfway to her goal of traveling to all 50 states!



Ana Safri: PGY1

Dr. Safri is from Memphis, Tennessee. She graduated from Texas Tech University School of Pharmacy in 2021. Her clinical areas of interest include critical care and cardiology. In her spare time, she enjoys watching TV, traveling, and eating anything chocolate. A fun fact about Ana is that she spent a summer in Khorog, Tajikistan creating and delivering a curriculum for English as a second language!



Jasmine Tankard: PGY1

Dr. Jasmine Tankard is from Marlboro, New Jersey. She graduated from the University of Connecticut School of Pharmacy in 2021. Her areas of interest include pediatrics, internal medicine, and ambulatory care. In her spare time, she enjoys cooking, traveling, and spending time with friends and family. A fun fact about Jasmine is that she worked at White Castle during high school and her undergraduate studies!



Maha AlDoughaim: PGY1 - International

Dr. AlDoughaim is from Riyadh, Saudi Arabia. She graduated from the Medical University of South Carolina in 2021. Her clinical areas of interest are oncology and solid organ transplant. In her spare time, she likes to read, do CrossFit, and go for long walks. A fun fact about Maha is that she survived a flood while in Cuba!



Jordan Koloski: PGY1 - Non-traditional

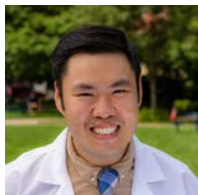
Dr. Koloski is from Lebanon, New Hampshire. He graduated from Northeastern University in Boston, MA in 2020. His clinical areas of interest include critical care, infectious disease, and emergency medicine. In his spare time, he enjoys being active, playing board and video games, and hanging out with friends. A fun fact about Jordan is that he has done a sprint triathlon and has aspirations of one day completing an Ironman!



Sopheaktra Kong: PGY1 - Non-traditional

Dr. Kong is from Lowell, Massachusetts. He graduated from Massachusetts College of Pharmacy and Health Sciences in 2019. His clinical areas of interest are critical care and emergency medicine. In his spare time, he enjoys playing basketball, cooking, and playing with his dog, Maya. A fun fact about Sopheaktra is that he once ate 18 hot dogs in one day!

2021-2022 BOSTON MEDICAL CENTER PGY-2 PHARMACY RESIDENTS



Calvin Chan: PGY2 Internal Medicine

Dr. Chan is from Cincinnati, Ohio. He graduated from The Ohio State University College of Pharmacy in 2017 and completed his PGY-1 residency at Eskenazi Health. His clinical areas of interest are neurology/psychiatry, endocrinology, and infectious diseases. In his spare time, he enjoys group fitness classes, trivia nights, and supporting the Ohio State Buckeyes football team (Go Bucks!). A fun fact about Calvin is that he helped organize the Guinness World Records' Largest Water Balloon fight in 2011!



Courtney Cameron: PGY2 Ambulatory Care

Dr. Cameron is from Annapolis, Maryland. She graduated from the University of Rhode Island in 2020 and completed her PGY-1 residency at Johns Hopkins Bayview Medical Center. Her clinical areas of interest are endocrinology, gastroenterology, and oncology. In her spare time, she enjoys reading, hiking, and trying new foods and activities. A fun fact about Courtney is that she has been to a psychic twice!



Rami Farjo: PGY2 Ambulatory Care

Dr. Farjo is from West Springfield, Massachusetts. He graduated from Massachusetts College of Pharmacy and Health Sciences in 2020 and completed his PGY-1 residency at Baystate Medical Center. His clinical areas of interest include endocrinology, cardiology, and geriatrics. In his spare time, he likes to travel to new places, spend time with his dog, Leo, and listen to classical music. A fun fact about Rami is that he taught himself to play the piano!



Gideon Berdahl: PGY2 Critical Care

Dr. Berdahl is from Sioux Falls, South Dakota. He graduated from the University of Mississippi School of Pharmacy in 2020 and completed his PGY-1 residency at Boston Medical Center. His clinical areas of interest are emergency medicine, critical care, and solid organ transplant. In his spare time, he likes to play tennis, exercise, and spend time with friends and family. A fun fact about Gideon is that he has had a collapsed lung...TWICE!



Cedric White: PGY2 Emergency Medicine

Dr. White is from Randolph, Massachusetts. He graduated from the University of Connecticut School of Pharmacy in 2020 and completed his PGY-1 residency at Massachusetts General Hospital. His clinical areas of interest include emergency medicine, substance use disorders, and toxicology. In his spare time, he enjoys watching football (Go Pats!), going to breweries, trying new restaurants and spending time with family and friends. A fun fact about Cedric is that he is an identical twin!



Spencer Sutton: PGY2 Infectious Disease

Dr. Sutton is from Chelmsford, Massachusetts. He graduated from Northeastern University School of Pharmacy in 2020 and completed his PGY-1 residency at Boston Medical Center. His clinical areas of interest are infectious diseases, antimicrobial stewardship, and critical care. In his spare time, he enjoys cooking, playing Dungeons & Dragons, and traveling. A fun fact about Spencer is that he was apprehended back stage at the Jonas Brothers Reunion Tour! (Spencer and the Jonas Brothers have since reconciled their differences)



Jessica Freydmann: PGY2 Oncology

Dr. Freydmann is from Marlboro, New Jersey. She graduated from the Ernest Mario School of Pharmacy, Rutgers University in 2020 and completed her PGY-1 residency at Boston Medical Center. Her clinical areas of interest include oncology and cardiology. In her spare time, she likes to play Spikeball, go to Boda Borg, and eat dessert before dinner. A fun fact about Jessica is that she competed in the largest beach ultimate (Frisbee) tournament in the world!

NEW PRECEPTORS AND PRECEPTOR ACTIVITIES



**Michelle Min,
PharmD, BCACP**

Professional

Alma mater: Northeastern University

Residency: PGY-1: North Shore University Hospital; PGY-2 Ambulatory Care: Northwell Health

Practice/research interests: Chronic disease state management, Anticoagulation, Transitions of care

Rotations offered: Anticoagulation/Anemia, Primary Care

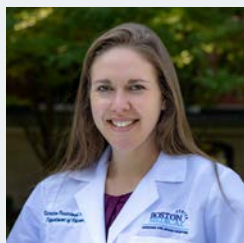
Personal

Born and raised: Born in Seoul, South Korea; Raised in Austin, TX

What was your path to BMC?: BMC was my first co-op as a pharmacy student. Towards the end of my PGY2 residency, one of my APPE preceptors and now current ambulatory care manager, Joseph Falinski, helped bring me back to Boston!

What do you like most about working at BMC? My colleagues! I am so proud and honored to be working with such a dedicated and accomplished group of pharmacists. We go above and beyond for our patients!

What are your goals for next year? Professional: Establish strong rapport with patients and colleagues at my new clinic site at GIM. Personal: Travel to Japan!



**Kiersten
Pasternak, PharmD**

Professional

Alma mater: The Ohio State University College of Pharmacy

Residency: PGY-1: Virginia Commonwealth University

Practice/research interests: Medication safety, formulary management, optimizing pharmacy services in the operating room, Enhanced Recover After Surgery (ERAS), Antimicrobial Stewardship (AST)

Rotations offered: Surgery, Integrated Procedural Platform (IPP)

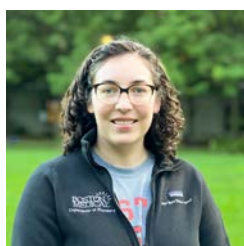
Personal

Born and raised: Columbus, Ohio

What was your path to BMC? After residency I worked at The Ohio State Wexner Medical Center as a pharmacy generalist, staffing primarily in the OR and ICU pharmacy satellites. I came to BMC in December 2019.

What do you like most about working at BMC? My coworkers and how much academia (teaching, learning, professional development, precepting, etc.) is emphasized and supported here.

What are your goals for next year? My goals are to continue to improve the IPP space, continue to work to become fluent in Spanish, and lastly, to perfect my chocolate chip cookie recipe.



**Anne Marie
Guthrie, PharmD,
BCCCP**

Professional

Alma mater: University of Kentucky College of Pharmacy

Residency: PGY-1: University of Illinois at Chicago; PGY-2 Emergency Medicine: University of Kentucky

Practice/research interests: toxicology, emergency preparedness, opioid stewardship, simulation based learning

Rotations offered: Emergency Department – Overnight

Personal

Born and raised: Nolensville, TN, a small town outside of Nashville

What was your path to BMC?: Via Boise, Idaho where I was working my first job after residency. I wanted to be back in a teaching institution to more regularly interact with learners at all levels. A major added benefit is being closer to my family, particularly my sister who lives in New York City.

What do you like most about working at BMC?: Working with learners of various levels and disciplines.

What are your goals for next year?: I would love to see and get to know Boston and New England when there isn't a global pandemic looming over everything you do.



**Danielle Keadjian
Lindale, PharmD,
BCCCP**

Professional

Alma mater: Simmons University/MCPHS University-Boston (dual degree BS chemistry/PharmD)

Residency: Boston Medical Center

Practice/research interests: ED antimicrobial stewardship, sedation/pain management

Rotations offered: Emergency Medicine

Personal

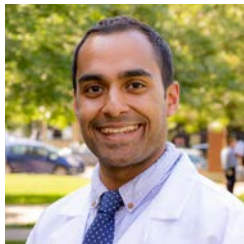
Born and raised: Woburn, MA

What was your path to BMC? A short one, this was my first job out of school! It's been an amazing experience from being a CP1, resident, CP2 in central, scheduler, and one of first few ED trained pharmacist from the central group.

What do you like most about working at BMC? Not just one thing, many things! The patients, my amazing coworkers, and being a valued member of a team that provides excellent patient care.

What are your goals for next year? Become a certified EM pharmacist and continue to grow in my role as student and resident preceptor.

NEW PRECEPTORS AND PRECEPTOR ACTIVITIES



Shyam Patel,
PharmD, BCCCP

Professional

Alma mater: University of Connecticut School of Pharmacy

Residency: PGY-1: UConn Health; PGY-2 Critical Care: Boston Medical Center

Practice/research interests: Sepsis, Sedation in Critically Ill, Anticoagulation

Rotations offered: MICU, Other CC/EM rotations as needed

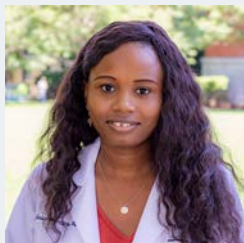
Personal

Born and raised: Born in Islip, NY, Raised largely in East Hartford, CT

What was your path to BMC? Completed my PGY1 at UConn Health where I was able to cement my interest in critical care after an early rotation in their MICU. PPS'd with BMC at ASHP Midyear 2018 where I met Kim A. and Danielle B. and quickly decided shortly afterwards that I would apply to BMC for the Critical Care PGY2 position. May have inadvertently exposed preceptors to the flu after interviewing here sick...

What do you like most about working at BMC? The people – all members of the healthcare team have the same “roll up your sleeves and get it done” attitude with the patient at the center of every decision. Having an incredibly supportive and collegial team of pharmacists makes coming to work fun.

What are your goals for next year? Get more involved with precepting students and residents and start working on additional publications.



Jessica Fortune-Chery,
PharmD, BCACP

Professional

Alma mater: MCPHS University

Residency: PGY-1: Wilkes-Barre VA Medical Center

Practice/research interests: Complex Care, Primary Care, Teaching

Rotations offered: Ambulatory Care - Complex Care Management

Personal

Born and raised: I was born and raised in Haiti. I moved to the US in 2007

What was your path to BMC? I went to school in Boston then moved to Pennsylvania for my residency. I took a position there as an ambulatory care clinical pharmacy specialist but eventually relocated back to Boston to be closer to family.

What do you like most about working at BMC? I like that we serve a diverse population.

What are your goals for next year? Travel more



Jasmine V. Patel,
PharmD, BCOP

Professional

Alma mater: Ernest Mario School of Pharmacy, Rutgers University

Residency: Hartford Hospital; PGY-2 Hematology/Oncology: Boston Medical Center

Practice/research interests: Oral oncology, Disparities in Healthcare,

Rotations offered: Outpatient Specialty Pharmacy (Oral Oncology), Inpatient Hematology/Oncology I and II

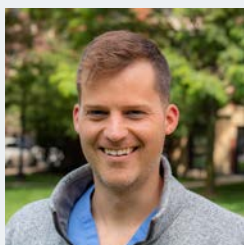
Personal

Born and raised: Union, NJ

What was your path to BMC? While completing my PGY1 pharmacy residency in Hartford Hospital, I worked with a former oncology pharmacist from BMC who encouraged me to pursue a career in hematology/oncology pharmacy. I matched with BMC and loved the organization's mission and values. When there was an opportunity to stay on as a clinical specialist, the decision was easy!

What do you like most about working at BMC? Our patients and the providers, pharmacists, and nurses I get to work with!

What are your goals for next year? I would like to continue collaborating with our hematologists and oncologists to expand clinic specialty pharmacy services and access to hematology/oncology pharmacy specialists.



Ryan Murphy,
PharmD, BCPS

Professional

Alma mater: MCPHS University

Residency: PGY-1: SOPS/CPS

Practice/research interests: Opioid stewardship, antimicrobial stewardship, anticoagulation

Rotations offered: Surgery

Personal

Born and raised: Monson, MA

What was your path to BMC? Following residency, I worked as a medicine pharmacist in a community hospital serving a similar patient population to BMC. I was looking to move to a larger institution that served a similar population and BMC happened to be hiring in the surgery space.

What do you like most about working at BMC? Our patients and my colleagues

What are your goals for next year? Expand pharmacy services in the surgery space. Begin precepting students and residents and become more involved in quality improvement.

NEW PRECEPTORS AND PRECEPTOR ACTIVITIES



Karina Soares,
PharmD, BCCCP,
BCPS

Professional

Alma mater: Saint Joseph School of Pharmacy

Residency: PGY-1: Lenox Hill Hospital

Practice/research interests: Anticoagulation, Pain Management

Rotations offered: General Surgery

Personal

Born and raised: Born in Brazil but grew up in El Paso, TX

What was your path to BMC?: After completing my PGY-1 in New York, I worked as a multispecialty pharmacist in an academic teaching hospital in Connecticut. I wanted to become more specialized in an area and by chance BMC was hiring in the surgery space.

What do you like most about working at BMC?: I really enjoy the people I work with here, from fellow pharmacists to providers and nurses. We really all work together to offer the best care possible for our patients.

What are your goals for next year?: I am looking forward to precepting students and residents and getting more involved in our quality improvement projects.



Eleanor Broadbent,
PharmD, BCIDP

Professional

Alma mater: Northeastern University

Residency: PGY-1: Brigham and Women's Hospital; PGY-2 Infectious Diseases: University of Minnesota Medical Center / Fairview

Practice/research interests: Infections in Immunocompromised Patient Populations, HIV, Beta-Lactam Allergies, and Teaching

Rotations offered: IM II – Infectious Diseases (PGY-1); Internal Medicine - ID (PGY-2)

Personal

Born and raised: That's a difficult question for me! I was born in Oxford, England and moved to Massachusetts when I was four. I spent seven years in MA before moving to Melbourne, Australia! My family then emigrated back to the US and I spent my high school years on Long Island. Fun fact – I officially became a US citizen last summer!

What was your path to BMC?: Attending pharmacy school in Boston, I always knew about BMC pharmacy department's great reputation. I left Boston for my PGY-2 because I wanted exposure to pharmacy practice in a different area of the country. Minnesota was great, but I really felt Boston was my home after spending my college years here (especially as it was the longest I ever lived in one place in my entire life!). I was very determined to obtain a job as an ID clinical pharmacist at an academic medical center, with the hope of returning to Boston. I was so fortunate that this position became available at BMC, where I am able to practice at the top of my license whilst providing care to an underserved patient population.

What do you like most about working at BMC?: My co-workers. When I started at BMC almost two years ago, the medicine team made me feel so welcome. Other than our patient population, they are the reason I want to come to work each day! Our team is so collaborative, and truly motivated to do exceptional work for our patients, no matter what challenges are in the way. They inspire me!

What are your goals for next year?: I am excited to transition into co-chair of the REST committee after being a committee member for two years. With any luck, the next year will bring back an opportunity to plan some fun in-person events for our residents! One personal goal I am working towards is getting back into swimming. I am hoping to compete in a couple of open water swim events this summer (depending on COVID, of course!).



Simon Gorelikov,
PharmD, BCPS

Professional

Alma mater: Northeastern University

Practice/research interests: Hematology/Oncology, Practice management and optimization of technology, financial implications of cancer care

Rotations offered: Outpatient Hem/Onc I and II

Personal

Born and raised: Moscow, Russia

What was your path to BMC?: Previously worked at BMC as a clinical pharmacist then went on to do other things and ultimately came back to pursue a Hem/Onc clinical specialist position.

What do you like most about working at BMC?: Diversity, enthusiasm, learning.

What are your goals for next year?: Update treatment plans and continue to develop as a preceptor.

BOSTON
MEDICAL
CENTRAL

ALUMNI UPDATES

Congratulations to all Boston Medical Center Pharmacy Residency Alumni on your personal and professional achievements! Here are a few highlights from the past year:

- Dr. Shyam Patel, PharmD (PGY2 CC '20) is staying at Boston Medical Center and will be working as a Critical Care pharmacist.
- Dr. Stephanie Forman (Baker) (PGY1 '11, PGY2 CC '12) is an Assistant Professor at MCPHS University and has been assisting Boston vaccine clinics deliver medication to our most vulnerable patients.
- Dr. Yelena Itkin (PGY1 '03) is a San Diego VA Medical Center Ambulatory Pharmacist who is proudly caring for Veterans through COVID -19 vaccination clinics.
- Dr. Radhika Jhaveri (PGY2 Onc '06) is a Clinical Pharmacy manager in Hem/Onc at Boston Medical Center and happy to provide exceptional care to our oncology patients thru a pandemic.
- Dr. Keith Dunn (PGY1 '09) is the Janssen Pharmaceuticals Scientific Field Director for Infectious Diseases & Vaccines and worked on the Janssen COVID-19 Vaccine to ensure healthcare providers have access to the medical information they need.
- Dr. Solange Mason (PGY1 '11) is currently working as the Director of Global Case Management for Apellis Pharmaceuticals.
- Dr. Cara Marceau (Russo) (PGY2 '06) just passed her BCOP exam and is working as a Oncology pharmacy supervisor at UMass Memorial Health alliance cancer center.
- Dr. Jeff Dandurand (PGY1 '09) is the System Director of Pharmacy for CharterCARE Health Partners and coordinated COVID vaccine response and roll out for his hospital and community.
- Dr. David Fett (PGY1 '18 PGY2 EM '19) is working at Cooper University Healthcare as a Clinical Pharmacy Specialist in the Emergency Department. He was able to expand out ED services and create a culture of cooperation all within one year.
- Dr. Karly Erickson (PGY2 '13) won the UCSF Apple Award for Excellence in Teaching and the Sequoia Award for most impact to medical residents' education for her work as a Clinical Pharmacist in the Emergency Medicine at Kaweah Health Medical Center
- Valeria Coppenrath (Azzopardi) (PGY1 '08 PGY2 '09) Completed a Pharmacogenomics certificate as part of her role as MCPHS University Associate Professor

A CALL TO ALUMNI:

In our thirty-two years of graduating leaders in pharmacy practice, we know there are MANY alumni that deserve recognition. We want to try to start to keep track of our established and emerging leaders and recognize your hard work and accolades in your career as well as any personal accomplishments you wish to share with the BMC Pharmacy Residency Alumni community. Please send any personal or professional updates and accomplishments you would like to share via email to BMCParmacyResidency@bmc.org with the subject heading: "Class of XXXX Alumni Update". Please also utilize the same email address to keep us updated with any changes in jobs or contact information throughout the year!

ACCOMPLISHMENTS/POSTERS/PUBLICATIONS

EMERGENCY MEDICINE

Natalija Farrell, PharmD, BCPS, DABAT

Clinical Coordinator – Emergency Medicine Director,
PGY2 Emergency Medicine

Poster:

- Granato C, **Farrell NM**. Initiation of buprenorphine-naloxone for naloxone-precipitated withdrawal after opioid overdose: a retrospective case series. Poster Presented at: ASHP Midyear Clinical Meeting; Dec 2020; Virtual.

Bryan Gendron, PharmD, BCPS

Clinical Specialist, Emergency Medicine

Poster:

- Vincent WR, Gendron BJ, Yeh K, Mordino J, Horbowicz KJ**. Survey of pharmacy residency. Survey of pharmacy residency graduates on participating in improvement science curriculum and completing a quality improvement project. Poster Presented at: MSHP; May 15, 2021.

Publication:

- Crimlisk JT, Conlin G, **Gendron BJ**, et al. Medical emergency kits in ambulatory care clinics: implementation and staff perception of usability and feasibility. *Nurs Manage*. 2020 Nov ;51(11):39-46.

Elena Serpico, PharmD, BCCCP

Clinical Pharmacist II, Emergency Medicine

Poster:

- Serpico E, Yeh K, Feeney M, Ackerbauer K**. A (vaso)Pressin Matter: Assessing the impact of vasopressin cost savings initiatives. Poster Presented at: MSHP; May 15, 2021.

ONCOLOGY

Jasmine V. Patel, PharmD, BCOP

Clinical Specialist, Hematology/Oncology

Poster:

- Patel JV, Hughes DM, Quinn K**, et al. Effect of an outpatient pharmacy team to improve management and adherence to oral chemotherapy. Poster Presented at: SABCS; Dec 2020; Virtual.

Publication:

- Dimond C, Negroiu A, **Hughes DM, Patel JV**. Fatal hepatitis B reactivation in a patient receiving chemoradiation for cervical cancer. *J Oncol Pharm Practice* 2020 Oct 14: [Online ahead of print].

David Hughes, PharmD, BCOP

Clinical Specialist, Hematology/Oncology

Poster:

- Blevins F, **Hughes DM**, Mildrod C, et al. Skin hyperpigmentation is a frequent side effect of immunomodulatory drugs in black patients. Poster Presented at: ASH Annual Meeting and Exposition; Dec 2020; Virtual.
- Geils G, Shahid Z...**Hughes DM**, et al. Low-dose selinexor for the treatment of patients with severe COVID-19. Presented at ID Week 2020 and ISIRV 2020.

Publications:

- Milrod CJ, Blevins FR, **Hughes D**, Lerner A, Sarosiek S, Sanchowala V, Sloan JM. Incidence of Skin Hyperpigmentation in Black Patients Receiving Treatment with Immunomodulatory Drugs. *Blood*. 2021 Mar 16:blood.2021010853.
- Hughes DM, Jhaveri R, Shah B**, et al. Improvement in Clinic Efficiency, Patient Satisfaction, and Overcoming Unique Challenges in the Era of COVID-19 with Implementation of Subcutaneous Daratumumab in Patients with Multiple Myeloma (MM) and Light Chain (AL) Amyloidosis. *Blood*. 2020;136 (supplement 1):42-43. [Online-only].
- Hughes DM**, DeMari S, Sanchowala V, Sloan JM. Safety, tolerability, and efficacy of selinexor in a patient with relapsed light chain (AL) amyloidosis. *Clinical Lymphoma Myeloma Leukemia*. 2020: [Online ahead of print].
- Hughes DM**, Blevins F. A New Monoclonal Antibody for R/R MM: Isatuximab-irfc. *Pharmacy Times*. July 2020
- Hughes DM**, Vose R, **Shah B, Jhaveri R**. Pharmacist-Run Chemotherapy-Induced Nausea & Vomiting Protocol Improves Patient Outcomes and Benefits Physician Workflow. *J Hem Onc Pharm* 2020; 10(4): 190-196
- Hughes DM**, Staron A, Sanchowala V. A Pharmacist's Review of the Treatment of Systemic Light Chain (AL) Amyloidosis. *J Oncol Pharm Practice*. Sept 2020; 27 (1), 187-198
- Dimond C, Negroiu A, **Hughes DM, Patel J**. Fatal hepatitis B reactivation in a patient receiving chemoradiation for cervical cancer. *J Oncol Pharm Practice*. Sept 2020

Radhika Jhaveri, PharmD, BCOP

Clinical Manager, Hematology/Oncology

Publication:

- Henshaw L, Jhaveri R. First-in-Class Approved Anti-BCMA Therapy: Belantamab Mafodotin-blmf. *Pharmacy Times*. December 2020.

INFECTIOUS DISEASES:

Alison Blackman, PharmD, BCIDP

Clinical Specialist, Infectious Diseases

Publications:

- Blackman AL, Joshi M, Doub J, Seung H, Banoub M, Claeys KC, Heil EL. Evaluation of intraoperative topical vancomycin and the incidence of acute kidney injury. *Surgical Infections*. 2021. [Epub ahead of print]
- Blackman AL, Jarugula P, Nicolau DP, Chui SH, Joshi MG, Heil EL, Gopalakrishnan M. Evaluation of linezolid pharmacokinetics in obese patients with severe skin and soft tissue infections. *Antimicrob Agents Chemother*. 2021;65(2):e01610-20.
- Blackman AL, Rubin EC, Broadbent EK, Brade KD. Updates on Combination Therapy for Methicillin-Resistant *Staphylococcus aureus* Bacteremia. *Curr Infect Dis Rep*. Sep 2020 22:28

ACCOMPLISHMENTS/POSTERS/PUBLICATIONS

Poster:

- Pincus K, **Blackman A**, Suen S, Devabhakthuni S, Gale SE, Seung H, Noel Z, Pandit NS. Statin dose appropriateness in patients living with HIV compared to uninfected patients. Poster presented at: ACCP Virtual Annual Meeting. October 2020.

Eleanor Broadbent, PharmD, BCIDP

Clinical Specialist Infectious Diseases/Medicine

Posters:

- Broadbent EK**, Schanz C, Boeser KD, et al. Creation of an Emergency Department (ED)-Specific Urine Antibigram and Evaluation of Urinary Tract Infection (UTI) Prescribing Practices at a Tertiary Academic Medical Center. Poster Presented at: ID Week, Oct 2020.
- Dass AM, **Broadbent EK**, Schanz C, et al. Development of a Pediatric Emergency Department (ED) Uropathogen Antibigram and Empiric Urinary Tract Infection (UTI) Treatment Algorithm. Poster Presented at: ID Week, Oct 2020.
- Freydman J**, **Ketema P**, **Wang D**, **Patel JV**, **Blackman AL**, **Broadbent EK**. Optimizing antibiotic management for the treatment of febrile neutropenia at a large academic medical center. Poster presented at : MSHP; May 20th, 2021.

Ellen Rubin, PharmD, BCPS

Clinical Specialist Infectious Diseases/Medicine

Poster:

- Rubin E**, **Blackman A**, **Broadbent E**, **Wang D**, **Plasari I**, **Ketema P**, **Brade K**, Barlam T. Expansion of an antimicrobial stewardship program through implementation of a discharge verification queue. Poster Presented at: MSHP; May 15, 2021.

Karrine Brade, PharmD, BCPS-AQ ID, BCIDP

Clinical Coordinator, Infectious Diseases

Publications:

- Sinha P...**Brade KD**, et al. Early administration of interleukin-6 inhibitors for patients with severe COVID-19 disease is associated with decreased intubation, reduced mortality, and increased discharge. *Int J Infect Dis.* 2020 Oct;99:28-33.
- Claeys KC, **Brade KD**, Heil EL. Should Therapeutic Monitoring of Vancomycin Based on Area under the Curve Become Standard Practice for Patients with Confirmed or Suspected Methicillin-resistant *Staphylococcus aureus* infection? *Can J Hosp Pharm.* 2020 May-Jun;73(3):232-237

Posters:

- Zabrosky R**, **Sutton S**, **Rubin E**, **Liu E**, **Brade K**, **Serafin H**. Improving Transitions of Care for High-Risk Oral and Intravenous Antimicrobials. American Society of Health-System Pharmacists Midyear Clinical Meeting. Virtual Meeting. December 2020. *Poster presented*

Min Zhang, PharmD, BCPS

Clinical Specialist Medicine/OB

Publications:

- Shi XP, Lao DH, Xu Q, **Zhang M**, Lu YH, Gong Y, Wang T. Vancomycin-induced acute kidney injury after liver transplantation. *Hepatobiliary Pancreat Dis Int.* 2021 Apr 4:S1499-3872(21)00067-9.

AMBULATORY CARE

Kelsey Norman, PharmD, BCCP, BCPS

Clinical Specialist Cardiology

Publications:

- Benbrahim M, **Norman K**, Sanchorawala V, Siddiqi OK, **Hughes D**. A review of novel agents and clinical considerations in patients with ATTR cardiac amyloidosis. *J Cardiovasc Pharmacol.* 2021. Publish Ahead of Print

Katelyn O'Brien, PharmD, BCPS, CDE

Clinical Specialist, Primary Care

Publication:

- Kathryn L. Fantasia...Megan Bergstrom, **Katelyn O'Brien**, et al. Professional continuous glucose monitoring and endocrinology eConsult for adults with type 2 diabetes in primary care: Results of a clinical pilot program. *Journal of Clinical & Translational Endocrinology*, Mar 2021; 24.

PEDIATRICS

Min Zhang, PharmD, BCPS

Clinical Specialist Medicine/OB

Publications:

- Xu ZY, Guo HL, Li L, Zhang M, et al. Genetic and Non-genetic Factors Contributing to the Significant Variation in the Plasma Trough Concentration-to-Dose Ratio of Valproic Acid in Children With Epilepsy. *Front Pediatr.* 2021;8:599044.
- Zeng YY, **Zhang M**, Ko S, Chen F. An Update on Cardiovascular Risk Factors After Kawasaki Disease. *Front Cardiovasc Med.* 2021;8:671198.

LABOR AND DELIVERY:

Min Zhang, PharmD, BCPS

Clinical Specialist Medicine/OB

Poster:

- Zhang M, Shah K. Improving Access to Immediate Postpartum long-acting Reversible Contraception (LARC). Poster Presented at: MSHP; May 15, 2021; ACCP, May 25-26, 2021

MANAGEMENT:

Danielle Margetak, PharmD

Clinical Specialist Medicine/OB

Publication:

- Webb AJ, Margetak D, Schramm GE, Mordino J. The pharmacy residency program guide to Twitter. *JACCP.* 2020.

ACCOMPLISHMENTS/POSTERS/PUBLICATIONS

Christopher Fagbote, PharmD, BCACP

Poster:

- Fagbote C, Fortune-Chery J, Mordino J, Farrell NM, Horbowicz KJ, Payne-Cardona M, Hayden J, Brade K, Weekes S. Promotion of diversity and inclusion through an experiential education scholarship at an academic medical center: We are All-In. Poster Presented at: MSHP; May 15, 2021

Natalija Farrell, PharmD, BCPS, DABAT

Clinical Coordinator – Emergency Medicine Director, PGY2
Emergency Medicine

Publication:

- Farmer BM, Cole JB, Olives TD, **Farrell NM**, Rao R, Nelson LS, Mazer-Amirshahi M, Stolbah AI. ACMT position statement: medication administration and safety during the response to the COVID-19 pandemic. *J Med Toxicol.* 2020;16:481-3.
- Farrell NM**, Hayes BD, Linden JA. Critical medication shortages further dwindling hospital resources during COVID-19. *Am J Emerg Med.* 2020;40:202-203.
- Farrell NM**, Killius K, Kue R, Langlois BK, Nelson KP, Golenia P. A comparison of etomidate, ketamine, and methohexital in emergency department rapid sequence intubation. *J Emerg Med.* 2020;59:508-14.
- Farrell NM**, Payne-Cardona M. Survey of pharmacy residency graduates on participating in improvement science curriculum and completing a quality improvement project. Poster Presented at: MSHP; May 15, 2021.
- Payne-Cardona M**, **Farrell NM**. Gender Inequality in Pharmacy Leadership. Poster Presented at: MSHP; May 15, 2021.

CRITICAL CARE:

Kimberly Ackerbauer, PharmD, BCCCP

Clinical Coordinator, Clinical Specialist Medical ICU

Publications:

- Bosch NA, Crable EL, Ackerbauer KA, Clark K, Drainoni M, Grim V, Ieong MH, Walkey AJ, Murphy J. Implementation of a Phenobarbital-based Pathway for Severe Alcohol Withdrawal: A Mixed-Methods Study. *Annals of the American Thoracic Society.* Online ahead of print. May 2021

Poster:

- Ackerbauer K**, **Patel S**. A Novel Approach to Propofol Preservation during the COVID-19 Pandemic. Poster Presented at: MSHP; May 15, 2021.
- Serpico E**, **Yeh K**, **Feeney M**, **Ackerbauer, KA**. Cost: A (vaso)pressin matter; Assessing the impact of vasopressin cost savings initiatives. Poster presented at MSHP Virtual Symposium. May 2021
- Ackerbauer K**, **Patel S**. A Novel Approach to Propofol Preservation during the COVID-19 Pandemic. Poster presented at MSHP Virtual Symposium; May 2021

William R. Vincent III, PharmD, BCCCP

Clinical Coordinator Surgery

Publication:

- Hyland SJ, Brockhaus KK, Vincent WR, et al. Perioperative pain management and opioid stewardship: A practical guide. *Healthcare.* 2021;9(3):333.

Megan Feeney, PharmD, BCCCP

Clinical Specialist, Cardiac ICU

Poster:

- Avillach C, **Feeney ME**, Hassan Kamel MT, Mahmoud H, Zhen AW, Awais N, Ghai S. Circuit Clotting on Continuous Venovenous Hemofiltration in COVID-19 Patients at New England's Largest Health Safety-Net Hospital. Poster presented at ASN Kidney Week; October 2020; Virtual.

SURGERY:

Karina Soares, PharmD, BCPS, BCCPS

Clinical Pharmacist II - Surgery/Critical Care/ED

Publications:

- Petrosan A...Soares K, et al. Impact of Intravenous Methadone Administered Intraoperatively on Postoperative Opioid Utilization. *Annals of Pharmacotherapy.* Online ahead of print. Feb 2021.

BOSTON
MEDICAL

The logo for the Boston Medical Center. It features the words "BOSTON" and "MEDICAL" in a white, serif, all-caps font, stacked vertically. To the right of the word "BOSTON", a thin white circular arc is drawn. The word "CENTER" is written in a smaller, white, sans-serif, all-caps font, following the curve of the arc.



GET IN TOUCH WITH BMC PHARMACY RESIDENCY PROGRAMS!

Email: BMCPharmacyResidency@bmc.org or
contact via Twitter - @BMCPharmRes

CENTER
**BOSTON
MEDICAL**

One Boston Medical Center Place
Boston, MA 02118 • 617.638.8000 • BMC.org